

# AUCTION

## Terrey Collection of Vintage Radio



Detail of Eveready Display. Lot 93.

**SESSION TWO – Sunday, November 13, 2016 – 11 am until Finish**  
**The Barn at 498 Cross St., Carlisle, MA**

*Destined to be the Vintage Radio Auction of the Decade!*

**Web Site: [TerreyAuction.com](http://TerreyAuction.com)**

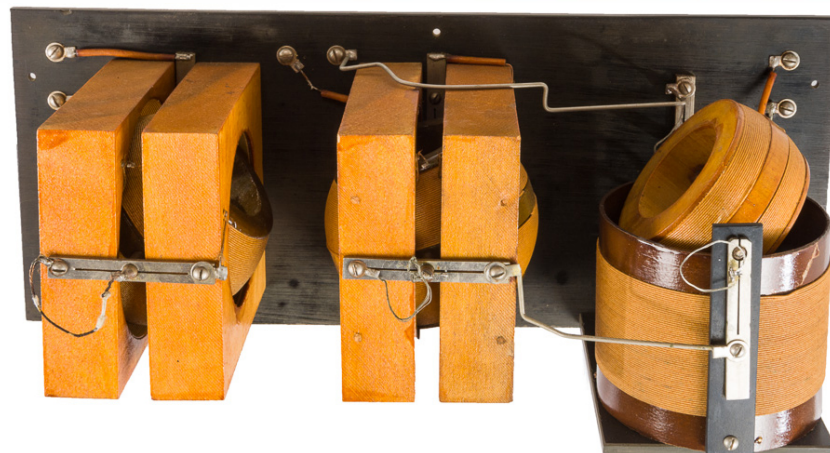
**Auctioneer: Wayne Tuiskula (MA License # 2591)**

**Central Mass Auctions, Worcester, MA – [www.centralmassauctions.com](http://www.centralmassauctions.com)**

**Radio Auction Consultant: Bob Dobush, 126 S. Main St., Wellington, Ohio 44090**



*The Rare Grebe CR-1 Receiver. Lot 132.*



*The Early Grebe CR-2. Lot 133.*

## **Auction Session Two**

Sunday, November 13, 2016 AT 11:00 AM

# Terrey Collection of Vintage Radio

### **Live Bidding on Site**

The Barn, 498 Cross St., Carlisle, MA

For On-Site Bidders: Un-Cataloged Box Lots and Tag Sale

### **Internet, Absentee and Telephone Bidding Available**

To arrange absentee and telephone bidding:

[info@centralmassauctions.com](mailto:info@centralmassauctions.com) – 508-612-6111

### **Preview:**

Saturday, November 12 – Noon to 10 pm

BBQ Reception, Saturday November 12 – 6 pm to 9 pm

Sunday, November 13 – Before the Auction – 9am to 11 am

### **Contact Info:**

Auctioneer: Wayne Tuiskula (MA License # 2591)

Central Mass Auctions, 255 Park Ave Suite #1000, Worcester, MA 01609

[www.centralmassauctions.com](http://www.centralmassauctions.com)

[info@centralmassauctions.com](mailto:info@centralmassauctions.com) – 508-612-6111

Radio Auction Consultant: Bob Dobush, 126 S. Main St., Wellington, Ohio 44090

Consignor: John Terrey, 498 Cross St., Carlisle, MA 01741

[TerreyAuction.com](http://TerreyAuction.com) [info@terreyauction.com](mailto:info@terreyauction.com)

Copyright John V. Terrey 2016



*The "3D" highlight of the 8-piece Eveready Columbia battery display. Lot 93.*

# THE TERREY COLLECTION OF VINTAGE RADIO

## THE STORY

I have been collecting old radios for a long time, in fact, for over 50 years!

In 1962, just after I graduated from MIT and started my first real job, my father visited me in Boston. Out of the blue, he gave me an old radio. He had been visiting a rancher in South Texas (where I was raised) and bragged about his electrical engineer son. The rancher excused himself for a moment and returned with an old radio. That set was the classic broadcast receiver from 1921, a Westinghouse RC/RADA, and that set is still in my collection today. There could have been no better set to start my collection!

That one set spawned a collection of nearly 1,000 radio items and now occupies 2,000 square feet in The Barn in Carlisle, MA. Many of you have visited, often following the winter Sunday morning RADIO flea markets. The guest book shows hundreds of entries from around the world.

So, how is it that I decided to offer the collection for sale through auction?

Over the years, I have attended many auctions, some of entire collections such as the 1,700+ item Ralph Muchow auction in 2001, the Robert Orr auction in Alabama in 1982 and the museum de-accession auction at the Ford Museum in Michigan in 1995. Yes, I purchased quite a few radios at these events.

I have realized, as did Ralph Muchow, "As collectors, we truly are temporary caretakers of these historical artifacts."

As a temporary caretaker, I want to host and meet these future caretakers of my sets! Thus, the two events this Fall. Each auction will be held on a Sunday, preceded by a preview/BBQ/reception on Saturday. Come one, come all, and share in this celebration of old radios and collecting. Enjoy the Grand Events even if you don't plan to bid.

### ABOUT THE COLLECTION

That first Westinghouse RC set did not sit on the shelf by itself for long. In the 1960s and 1970s, the flea markets and antique stores of New England presented lots of old radios. By the late 1970s, the collection had grown to cover a wall of shelves in my basement rec room



Eventually, I happened upon an article about collecting old radios by Jim Fred in an electronics magazine. That article introduced me to Morgan McMahan's book, "Vintage Radio", which at that time was one of the very few books about radio collecting. As with so many collectors when they first see "Vintage Radio," I wanted to collect every radio in the book.

Once I found my way to radio collectors in the New England and radio collecting clubs, I began to realize that there were others with the same "collecting gene" that I had. I was not unique, just off kilter!

Our family vacationed on Cape Cod and there I ran across a small radio and sound museum. I recall that it had vintage phonographs and a few radios, including the small Howe crystal set. The Howe became the first entry on my new "want list".

Then, in one of the many antique shops on the Cape, I saw an RCA Radiola Grand receiver, an impressive set. But the set that really caught my eye was the Radiola III-A receiver on the counter, with its vacuum tubes poking out. The radios were not for sale, but my radio-collecting engine was shifted up a notch and more items were added to my want list.

My first radio meet was a 1980s AWA Conference in Canandaigua, N.Y. I wandered, gawking at "so many radios" in the flea market, on tables, blankets and the grass! After scouring the New England antique shops to find only a radio or two, here were piles of Grebes, Atwater Kent breadboards and box sets, Federals, early wireless sets and more. Yes, I added a few more sets to my collection.

I attended as many meets as I could, from Boston

to California, from Chicago to Louisville, from Texas to Minnesota and Michigan. I joined every radio-collecting club I could find, and was active in many. These experiences educated me rather quickly and more additions worked their way into my collection.

In my collecting education, I benefited from the work of older and established collectors. Many had contributed articles to journals, presented at meets and wrote books. One of the first books on battery sets after "Vintage Radio" was Alan Douglas's three-volume "Radio Manufacturers of the 1920s", which became the new standard for the battery set collector. I gradually realized I wanted to find a way to contribute in my own way to the radio collecting community.

That possibility materialized when at the Elgin, IL Radiofest, I bumped into Gary Schneider, who had founded a monthly magazine on radio collecting a year earlier. The magazine had become too "successful" for him to continue part time and he was looking for a buyer. I realized that this was "The Opportunity". Late one evening, in the bar, I became the publisher of "Antique Radio Classified". I continued to publish it for 24 years.

All this time I was adding radios to the collection. The single basement wall grew to a full room... then the living room upstairs... and everywhere in the house that a radio could be placed. Eventually, my wife suggested that it was time to build that barn, something that I had been fantasizing about for years. So The Barn was constructed in 2006, and the radio collection had a new home!

It took a few years to decide on the scope of the collection. Although a number of pre-broadcast and wireless items were included, I decided that early

broadcast sets would be the focus.

### **A FEW NUMBERS**

The collection encompasses nearly all of the early items from Grebe (49 items, including the CR-1 through the CR-10), Adams Morgan (26 items, including the RA-6 tuner and the 2-5-U transmitter), R.C.A. (57 items, including Radiolas I through X), Federal (18 items, from the small "boxes", 8, 9, 55, 56 and 60 to the 57 to 61). Also included are items from Clapp-Eastham (59 items), Amrad (21 items), Crosley (63 items), Kennedy (18 items), Atwater Kent (39 items), John Firth (16 items), Magnavox (18 items), and Tuska (15 items).

The manufacturer listing above includes less than one-half of the collection. In addition, there are over 100 crystal sets, over 80 horn speakers and numerous loose couplers and crystal detectors! In fact, nearly 200 different manufacturers are represented.

### **THE AUCTION AND AFTER**

In a few months this collection will be spread across the U.S. and beyond. Enjoy the photos here of the collection and if you want to see the complete collection before the auction, I invite you to come visit The Barn.

I plan next year to find the time and commitment to complete a book on the collection. Thousands of photographs have been taken for the auction catalogs, keeping in mind the requirements for a collection book. Actually, it is the book that helps me part with my old radios, for as a book, the collection will live on.

Happy collecting!

John Terrey, August 2016



*A view of about 10% of the collection – An Ozarka immediate left, shelving for Atwater Kents left, Clapp-Easthams right, and an R.C.A. Radiola VII-B center.*

## **FAQ (Frequently Asked Questions)**

*(Taken from the website: TerreyAuction.com. Go there for the suggested clicks.)*

### **1. Do I need to let you know that I am attending?**

If possible, please click "Plan To/Might Come" so we can arrange for sufficient chairs/parking/food, etc. However, if at the last minute you decide to come, you are more than welcome.

### **2. Are you selling your entire collection?**

Yes... well... almost all. I'll be keeping some sets... my first set, some sets needing repair, and some others just because I like them. However, essentially all significant sets will be in the auction. But, to keep each auction to about 300+/- lots, there will not be room for some of the more common items in the live auction; they may be included in the tag sale. You will not be disappointed! And, there are several hundred items left over, some duplicates, some variations, some needing repair before auctioning... so there may be a third event. Keep in touch!

### **3. When will the complete catalog be available?**

The complete list and catalog should be posted in late October. An expanded listing with more pictures should be posted in early November, so check out the website every few days or so. A printed catalog can be mailed; click the "Request Catalog" on the web site.

### **3a. I am an avid radio collector with limited means - why should I attend this auction when I likely will not be able to afford the prices?**

This event is meant to appeal to as many as possible in the radio collecting world. There are over 300 lots in this auction, and quite a few box lots with topical contents – transformers, parts from specific makers, accessories, etc. – and these will not be sold on the Internet. There also will be a tag sale with radios, radio accessories, speakers, etc. which also are not available on the Internet. And, don't forget the Saturday evening barbecue and preview!

### **4. Is provenance noted on the items?**

All items in the cataloged auction have a sticker on the bottom noting that it is from the "Terrey Collection of Vintage Radio" along with an inventory number. In fact, a few of the items have prior provenance noted, such as from the Greenwood or Muchow collections.

### **5. What about the Box Lots?**

There is a lot of RADIO STUFF in my 100s of storage boxes and will be included in the box lots: tube sockets, knobs, head phones, parts, quack medical, radio chasses, empty radio cabinets and more. Some will be organized by manufacturer. You must attend to bid on the box lots.

### **6. Why a tag sale at an auction?**

Rather than spending auction time for bidding on a \$25, \$50 or \$75 item, we decided to place some of the lower valued items in a tag sale. You must attend to buy at the tag sale, and the terms will be cash or check -- to keep it simple. As was done at the September auction, we may have buyers draw numbers to see who has first, second, etc. choice in the tag sale.

### **7. What will be the pace of the auction?**

We are trying to hold the auction to about 300+/- cataloged lots, plus the box lots. This will probably take about 5-6 hours at a pace of about one per minute, or 60 per hour. Actually, 60 per hour is slow for many auctions; the pace usually is about 90/hour. We don't want the auction to be hurried. There will be a break from 1 to 1:30 for food, etc.

### **8. How will Internet, telephone and absentee (proxy or left) bids work?**

Before the auctions, details on Internet, telephone and absentee (proxy or left bids) bidding will be posted here. At the auction itself, the auctioneer will have assistants who execute, live, the absentee, internet and telephone bids.

### **9. When will the Internet bidding site be available?**

The link to the auctioneer and his internet site is posted on the website.

**10. What are the buyer's fees?**

For attendees who pay by check or cash, the fee will be 10%. There will be additional fees for paying by credit card and Internet bidding.

**11. How will shipping be handled?**

A local shipping company will do the shipping. The auctioneer will coordinate their pick up of your items. However, BUYER MUST ARRANGE FOR PICKUP OF LARGE ITEMS.

**12. What about consoles?**

There are some large and fragile items in the auction. We hope that a live/present bidder will be the successful bidder, otherwise, the winning bidder must be prepared to pay hundreds of dollars to pack and ship the item safely. Another possibility is to make arrangements for an attendee to transport it for you. BUYER MUST ARRANGE FOR PICKUP OF LARGE ITEMS.

**13. Will flea market-type selling be allowed in the parking areas?**

As much as attendees might want to, flea-market-type setup and selling will not be allowed in the parking areas.

**14. Will there be enough parking?**

We can easily handle about 75 people on site. A shuttle is will be arranged if needed. *If possible, please click "Plan To/Might Come" so we can arrange for sufficient chairs/parking/food, etc.*

**15. Will handicap parking be available?**

Some reserved parking spaces near the tent will be available and portable bathroom facilities will be on the same level. Only the box lots and tag sale items will be on the second floor of the barn. *If possible, please click "Plan To/Might Come" so we can arrange for sufficient chairs/parking/food, and special needs.*

**16. Will you be accepting offers on sets before the auction?**

Definitely, "NO." Over the last several years, I have sold some sets. However, most were not from the core of my collection, which is early broadcast sets. But, when the decision was made to have a Grand Auction, my radio sales stopped. No sales will be made except at the auctions.

**17. What about food?**

At the Saturday preview, there will be a Grand, Free BBQ Reception, 6pm to 9pm. At the preview before the auction on Sunday, there will be some free stuff... coffee, donuts, etc. Also free, for lunch on Sunday, the thoughts are for pizza. Also, there is a deli about 2-miles away.

**18. What about lodging in the area?**

Please see the lodging suggestions section.

**19. What about condition, working status, correct transformers, etc.?**

ALL ITEMS ARE SOLD AS IS, WHERE IS, WITH ALL FAULTS. Examine the items and look at the photos carefully for condition. We have attempted to point out major flaws, not-original items, etc. in the item descriptions. Although we did check tubes in many of the sets and have noted same, transformer continuity and correctness was not checked. A few tubes were stuck in their sockets and have not been removed and checked. Personal inspection is strongly suggested for all items. Not all items have been disassembled and, in fact, I have never looked inside many of the sets. On some of the photos, the color might be off, too dark, etc. Also, some of the photos have been enhanced so that detail can be seen. If more details are needed, visit or request using the auction email: info@TerreyAuction.com. AGAIN, ALL ITEMS ARE SOLD AS IS, WHERE IS, WITH ALL FAULTS. Final conditions of sale will be available on the day of the auction and will take precedence to this paragraph.

**20. Do you spell your name Terrey or Terry?**

The correct spelling is "TERREY". It's just the renegades who use "Terry". Please be careful to type it in correctly: TerreyAuction.com





## TERMS OF SALE – SESSION TWO TERREY AUCTION OF VINTAGE RADIO

Central Mass Auctions are estate and antique specialists handling estates throughout the Northeast and beyond. We sell a wide range of items - Period Furniture, paintings comic books & cards, etc.

Central Mass Auctions, 255 Park Ave Suite #1000, Worcester, MA 01609

508-612-6111 – [info@centralmassauctions.com](mailto:info@centralmassauctions.com) – [www.centralmassauctions.com](http://www.centralmassauctions.com)

**For onsite purchases**, payment may be made with cash, Visa, MasterCard, debit card or pre-approved check. Credit card payments for auction purchases cannot exceed \$5,000. Auctioneer reserves the right to hold merchandise purchased until funds have cleared. 15% Buyer's Premium with payment by VISA or MasterCard onsite the day of the sale. 10% Buyer's Premium with cash or check onsite the day of the sale.

**Phone and Absentee Bids** Accepted – VISA or MasterCard information is required to register for absentee or phone bidding. Payment must be made by check, money order or cash. Email or call for additional details. 10% Buyer's Premium for cash or check payment by absentee and phone bidders. Payment must be received by Friday, November 18<sup>th</sup> for all winning purchases. Telephone bidders must be pre-pared to bid over \$500.00 on a lot.

**Internet** bidding is available through Proxibid at [www.proxibid.com](http://www.proxibid.com). Bidders must register in advance and submit VISA or MasterCard information. Winning bidders credit cards will be charged through Proxi-bid's Auction Payment Network (APN) by November 14th. Please see additional Proxibid terms on our auction listing on their website. 15% Buyer's Premium for items purchased through Proxibid.

**Winning bidders may pick up their items or arrange for shipment.** Please bring boxes and any packing materials you may need for your purchases. As a courtesy, Central Mass Auctions will deliver items, with certain exceptions for large items as noted, to Worthington Box 13 Worcester Road, Charlton, MA for shipment. Worthington Box is a FedEx authorized shipper. Please contact Worthington Box in advance for any questions regarding rates, special packing requirements or for any other matter prior to bidding at 508-248-7370. Central Mass Auctions is not responsible for any damage from transporting or shipping of items.

Please bring a copy of your Massachusetts resale certificate when you register if you are tax exempt. Absentee bidders may email or send their resale certificate through U.S. Mail. Proxibid bidders need to enter their tax exempt ID when they register for the auction.

Central Mass Auctions reserves the right to hold purchases until funds have cleared. Winning bidders must remove items from the auction location by Saturday Dec. 2<sup>nd</sup>, after payment has cleared. Please contact us 2 days prior to your pickup time to make arrangements. Items not removed by Dec. 2<sup>nd</sup> without written permission will be considered abandoned property.

**License #2591 – Auctioneer: Wayne Tuiskula**

Subject to errors & omissions

### ABOUT THIS CATALOG AND THE AUCTION

All information, including photos, is best efforts. More photos are on web. All items sold AS IS, WHERE IS.

This is a NO RESERVE auction, Bidding, however, will usually begin at one-half the low estimate. It is expected that most items will sell between the low and high estimates, which are conservative estimates made by the auction team.

Internet, telephone and absentee bids will be made during the live auction.

All statements made in this catalog and elsewhere may be superseded by notice at the auction itself.



***A few unusual horn speakers. Top to bottom, left to right:  
Lots 271, 307, 243, 15, 253, 14, 209, 244.***

## Session #2 - Auction - Terrey Collection of Vintage Radio

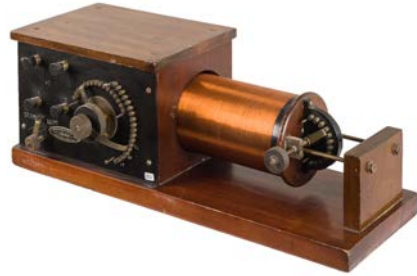
1. Adler Royal. 3-Tube Set. 3-Tube set manufactured by The Radio Shop, Chicago, Ill. Slant front. With (3) Bakelite base 199 display tubes.

[JVT#: 66] Estimate Low/High: 150 / 300



5. American Brass Products Co., Pottstown, Pa. Loose Coupler. Navy style with concentric tap switch.

[JVT#: 856] Estimate Low/High: 100 / 300



2. Adler Royal & Paramount. 3-tube receiver & Rheostat Panel. Adler Royal 3-tube receiver panel in home brew cabinet. Also an loose Paramount panel, with 2 rheostats. Both mfg. by Radio Shop. With (3) display tubes.

[JVT#: 653] Estimate Low/High: 100 / 300



6. Atlantic Radio Co., Boston, Mass. Crystal Set. In leatherette case. Paper instruction label in lid, dirty.

[JVT#: 929] Estimate Low/High: 100 / 350



3. Aerial Electric Co., Chicago, Ill. Combination King Receiver. Unusual! Use crystal or tube as detector. Use both for a loud speaker. Expanding coil collapses for storage. Missing cat whisker. With brass, tipped UV-99, Filament OK.

[JVT#: 905] Estimate Low/High: 200 / 500



7. Automatic Radio Mfg. Co. Blue Bird. 1-tube receiver with (1) Bakelite base tube, filament OK. Paper label inside, A bit dirty inside.

[JVT#: 667] Estimate Low/High: 150 / 300



4. Alldyne Co., Brooklyn, NY. Alldyne Crystal Set Type C. Unusual, tiny crystal set!

[JVT#: 901] Estimate Low/High: 100 / 250



8. B. M. & T. Co. Beaver Baby Grand Crystal Set with Clock. India Ivory Co. Case with clock and Beaver Baby Grand Crystal Set. See "Vintage Radio" page 70. Scarce!

[JVT#: 932] Estimate Low/High: 350 / 900



## Session #2 - Auction - Terrey Collection of Vintage Radio

9. B. M. & T. Co. (4) Beaver Baby Grand Crystal Sets. 1. Wood base, lettering raised on panel. 2. Wood base, metal tag on base. 3. Wood base, metal tag on case, "Optica Subirana Florida Corrientes (Argentina)". 4. Unitary plastic base, lettering on top.

[JVT#: 935] Estimate Low/High: 400 / 800



13. Blair, Mitchel, Co. Blairco T-1. Scarce. 1-tube receiver and 2-tube amplifier in cabinet with horn speaker opening across top of cabinet. Mfg. by Klitzen Co. With (3) brass based tubes with OK filament.

[JVT#: 610] Estimate Low/High: 100 / 300



10. Brotherhood Bank, Portland, Oregon Crystal Set in Chrome Coin Bank. Advertising: Brotherhood Co-Operative National Bank of Portland, Oregon. Very good condition!

[JVT#: 897] Estimate Low/High: 100 / 250



14. Baldwin Cone-shape Metal Horn Speaker, Unusual!. Good driver. Cord frayed

[JVT#: 889] Estimate Low/High: 100 / 300



11. Beaudouin, Ch., Paris. Coherer Receiver. Coherer set including Marconi-style coherer, bell/tapper and relay. From the collection of Ed Raser, ex Marconi operator, W2ZI.

[JVT#: 904] Estimate Low/High: 250 / 600



15. Borkman Radio Corp. Velvet Jewel Case Horn Speaker. Unusual. Speaker throat opens like a clam shell. Beautiful wood detail. Cord or driver open.

[JVT#: 778] Estimate Low/High: 200 / 500



12. Ben Radio Corp. Model A3. 5 Tube Receiver. Battery compartment on bottom of set. One panel knob cracked. Cabinet fair condition.

[JVT#: 698] Estimate Low/High: 25 / 100



16. Bristol Co. Audiophone Horn Speaker. Good driver.

[JVT#: 793] Estimate Low/High: 100 / 300



## Session #2 - Auction - Terrey Collection of Vintage Radio

17. Bristol Co. Model A Amplifier. One Stage Power Amplifier including original box (in fair condition). With display tube.

[JVT#: 933] Estimate Low/High: 100 / 300



21. Clapp-Eastham - Atlantic Radio. Slide Tuner. Single slide. Nice metal tags: "Clapp-Eastham" and "Sold By Atlantic Radio". Very good condition.

[JVT#: 863] Estimate Low/High: 100 / 300



18. Bunnell, J.H., Co. Loose Coupler. Navy style. With metal tag.

[JVT#: 862] Estimate Low/High: 100 / 300



22. Clapp-Eastham. Double Slide Tuner, Vertical. Uses flat wire. With metal tag. Good condition.

[JVT#: 865] Estimate Low/High: 100 / 300



19. Central Scientific Co. Crystal Set. With vertical spring-loaded cat whisker. Scarce. Fair condition.

[JVT#: 898] Estimate Low/High: 100 / 350



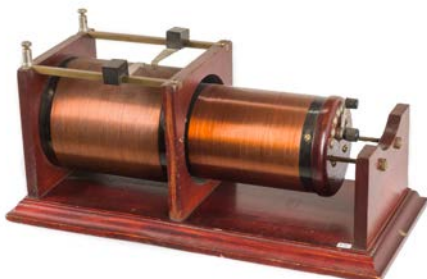
23. Cardwell 125A Receiver. Scarce! With 3 Bakelite based tubes, filaments OK.

[JVT#: 337] Estimate Low/High: 200 / 700



20. Chambers, F.B. Loose Coupler. Ca. 1915. Very good condition. (Note: Photo shows an old JVT#)

[JVT#: 946] Estimate Low/High: 200 / 450



24. Cardwell. Type 103-A Audio Amplifier. Rare! 2-tube amplifier, modified. Added tube socket and grid leak. Partial cabinet, missing bottom and 1 1/2 sides. Transformers appear original. See photos! (Note: Old JVT# in photo.)

[JVT#: 947] Estimate Low/High: 200 / 700



## Session #2 - Auction - Terrey Collection of Vintage Radio

25. Chelsea No. 104. 1-tube Regenerative Receiver. "No. 104" engraved on panel. Metal Chelsea tag on lid. No tubes. Very good condition.

[JVT#: 614] Estimate Low/High: 100 / 300



29. Columbia Radio Corp. Gem-O-The-Air Model A. Crystal set. Detector selects from 3 crystals. Paper label in lid intact.

[JVT#: 557] Estimate Low/High: 75 / 250



26. Chelsea Type 122. Regenerative Receiver, sloped front. Paper tag inside cabinet. No tubes.

[JVT#: 618] Estimate Low/High: 100 / 300



30. Crosley Pup. 1-tube radio with reproduction box. With WD-12 tube, good filament. Leads good. Original bottom cover with tag.

[JVT#: 393] Estimate Low/High: 250 / 600



27. Chelsea Type ZR-4. Transcontinental. Regenerative Receiver. With Gimbel Brothers, Philadelphia-New York-Milwaukee sticker on panel. Paper label inside cabinet.

[JVT#: 615] Estimate Low/High: 100 / 300



31. Crosley Bonzo Figurine. 4 1/2" tall, chalk. Rubbed in a few places, but otherwise good.

[JVT#: 394] Estimate Low/High: 150 / 350



28. Concert Radio Co., Sunnyvale, CA - Radio Shop. Type S Receiver. Scarce! With (1) brass base, tipped tube, filament OK. Mfg. by Radio Shop. Very good original condition.

[JVT#: 641] Estimate Low/High: 100 / 300



32. Crosley Crystal Set & Detector Unit. Crystal Set is early. Detector unit is an excellent reproduction by Dave Crocker. With (1) brass base, tipped display tube. Lower portion of knob has paint flake loss.

[JVT#: 945] Estimate Low/High: 250 / 550



## Session #2 - Auction - Terrey Collection of Vintage Radio

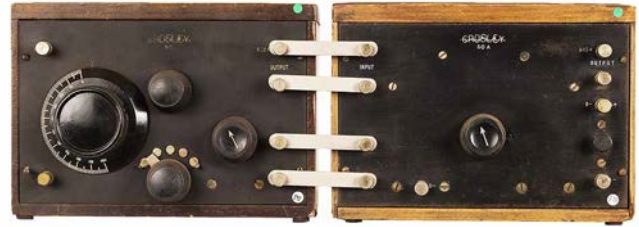
33. Crosley/W.S.A. Crystal Detector. Mfg. by Wireless Specialty Apparatus Co. Very good original condition with tag.

[JVT#: 938] Estimate Low/High: 100 / 250



37. Crosley 50 & 50A. 1-tube Regen. Bakelite book capacitor & tube socket. 2-tube AF Amplifier. Paper tags in lids with serial numbers matching panel rears. With (3) Bakelite base tubes, filaments OK.

[JVT#: 943] Estimate Low/High: 200 / 600



34. Crosley Harko Senior. With wood book capacitor and (1) brass base, tipped WD-12, filament OK.

[JVT#: 782] Estimate Low/High: 250 / 600



38. Crosley 51 (late) & 51A. 2-tube Regen. Bakelite tube socket & book capacitor. S/N on label and rear panel match. 1-tube AF amplifier. With (3) Bakelite base tube, filament OK. Both have paper labels inside lid.

[JVT#: 944] Estimate Low/High: 200 / 400



35. Crosley 2-Step Amp. Porcelain sockets. With (2) brass base, tipped display tubes. Has two holes in lid for tube tips.

[JVT#: 783] Estimate Low/High: 200 / 600



39. Crosley 51, Early. 2-tube regenerative. Bakelite tube socket & book capacitor. No tubes.

[JVT#: 369] Estimate Low/High: 75 / 150



36. Crosley Regenerative Receiver. Early one-tube set with "The Precision Equipment Co." paper label on back. Tube socket is chipped. With WD-12 display tube.

[JVT#: 934] Estimate Low/High: 100 / 300



40. Crosley 52, Early. 2-tube regenerative. Bakelite tube socket (one damaged) & Bakelite capacitor. In standard Crosley box, early. Has label in lid. No tubes.

[JVT#: 385] Estimate Low/High: 75 / 200



## Session #2 - Auction - Terrey Collection of Vintage Radio

41. Crosley ACE V. 1-tube regenerative circuit. Paper label in lid. (1) Bakelite base, tipped display tube.

[JVT#: 372] Estimate Low/High: 75 / 150



45. Crosley RFTA. Scarce! 1-tube RF amplifier. Wood book capacitor. Porcelain tube socket. With (1) brass base, tipped tube, filament OK. Cabinet slightly warped.

[JVT#: 366] Estimate Low/High: 200 / 600



42. Crosley ACE 2B. 2-tube AF amplifier. Bakelite Sockets. Paper labels on lid. With (2) Bakelite tubes, filament OK.

[JVT#: 376] Estimate Low/High: 100 / 300



46. Crosley V. 1-tube regenerative circuit. Wooden book capacitor. Porcelain tube socket. Paper label in lid. Hole in lid for tube tip. With (1) Bakelite, tipped tube, filament OK.

[JVT#: 373] Estimate Low/High: 100 / 300



43. Crosley ACE 3B. "The Precision Equipment Co." on panel. 3-tube regenerative. No tubes. Has (2) labels in lid.

[JVT#: 403] Estimate Low/High: 75 / 200



47. Crosley Two Step Amplifier, early. Early 2-tube AF amplifier. Porcelain Sockets. With (2) brass base, tipped display tubes. wWth holes in top of lid for tube tips. Has labels on lid.

[JVT#: 375] Estimate Low/High: 200 / 500



44. Crosley IV Special. Scarce! 2-tube AF amplifier. With paper labels on lid. With (2) Bakelite base tubes, filament OK.

[JVT#: 365] Estimate Low/High: 100 / 250



48. Crosley VI (Early). 2-tube regenerative. With (2) wood book capacitors; porcelain tube sockets. with (2) Bakelite base tubes, filament OK. Sticker on back of cabinet: "Tested and Approved... Radio Topics Magazine."

[JVT#: 406] Estimate Low/High: 150 / 350





## Session #2 - Auction - Terrey Collection of Vintage Radio

49. Crosley VIII. 3-Tube set. Labels on lid. No tubes. Porcelain tube sockets. S/N 416V. A winding or two on the coil is loose but otherwise in very good condition.

[JVT#: 780] Estimate Low/High: 150 / 400



53. Crosley. Playtime Grandmother Clock Radio Model 124. AC 5-tube radio in in 66 1/2" tall clock cabinet. Ca. 1931. Chassis is Model 125. Clock and face original. BUYER MUST ARRANGE FOR PICKUP.

[JVT#: 940] Estimate Low/High: 100 / 400



50. Crosley X. 4-tube set. Wood book capacitors. White ceramic tube sockets. 1-stage RF; detector; 2-stage AF. With (4) Bakelite base tubes, filament OK.

[JVT#: 411] Estimate Low/High: 150 / 300



54. Crosley. Signs, (3), One illuminated.. "You're There With A Crosley" (1) "87 Stations one night..." illuminated, frayed cord. (2) "Quality at Low Price..." (3) "Authorized Dealer..."

[JVT#: 922] Estimate Low/High: 250 / 600



51. Crosley Super XJ. 4-tube regenerative set. With (4) Bakelite base tubes, filament OK. Very good condition.

[JVT#: 410] Estimate Low/High: 100 / 250



55. Crosley. Xervac. Unusual. Hair restorer device, home model. Andre A. Cueto method to enhance blood circulation in scalp. With helmet. Rubber tube to helmet not original. Good cosmetic condition. BUYER MUST ARRANGE FOR PICKUP.

[JVT#: 911] Estimate Low/High: 200 / 700



52. Crosley XL. Scarce! 4-Tube receiver with built-in horn speaker. In cabinet with doors on front. Tubes untested. Missing horn driver & bracket. Minor loss in right grill cloth. Minor crack in right speaker grille.

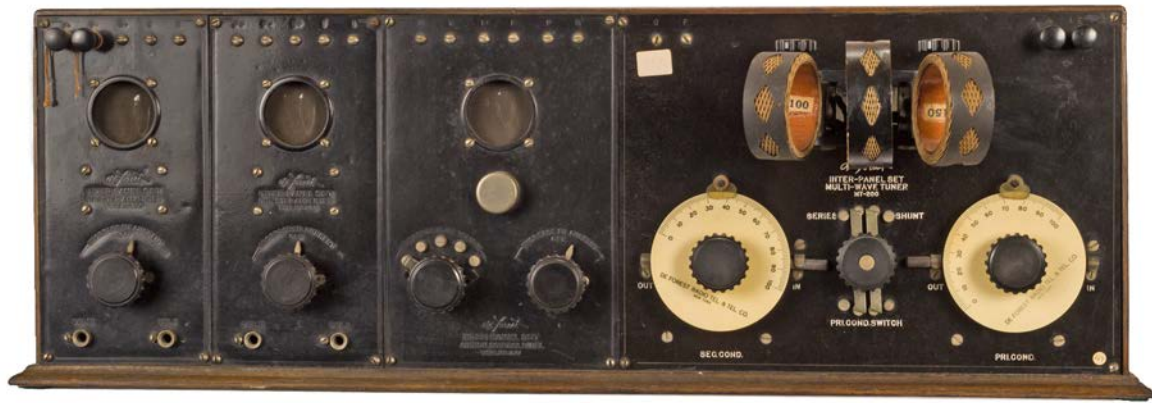
[JVT#: 937] Estimate Low/High: 300 / 600



56. Crosley Icy Ball. Unusual. Refrigerator module. Metal tag on handle. Fair to good cosmetic condition. Probably repainted. BUYER MUST ARRANGE FOR PICKUP.

[JVT#: 912] Estimate Low/High: 200 / 500





*DeForest Interpanel Receiver. Lot 60.*



*DeForest D-6 Regenerative Receiver. Lot 69.*



*Unique "New from Old Parts" Federal Superhet constructed by Billy Richardson. Lot 109.*

## Session #2 - Auction - Terrey Collection of Vintage Radio

57. DeForest. 3-panel Crystal Set. Crystal Set made from (3) DeForest unit panels : Single coil mount, crystal detector, Variable condenser. Panels in very good condition.

[JVT#: 277] Estimate Low/High: 150 / 400



61. DeForest. MT-200. Tuner with 3-coil mount. Panel very good. Coils frayed.

[JVT#: 270] Estimate Low/High: 200 / 600



58. DeForest. 3-Coil Mount on Base with switch. With (3) honeycomb coils

[JVT#: 767] Estimate Low/High: 75 / 250



62. DeForest. P-500. 1-tube Audion control panel. Has metal tag. With (1) Moorhead tube, good filament.

[JVT#: 271] Estimate Low/High: 300 / 700



59. DeForest. Large Variable Capacitor. 6" diameter, 5" high. A bit dirty.

[JVT#: 952] Estimate Low/High: 100 / 350



63. DeForest. SP-2. Rare. 2-stage audio amplifier. With (2) UV201A brass base, tipped tubes, good filaments. Very good condition.

[JVT#: 1] Estimate Low/High: 600 / 1500



60. DeForest. Interpanel. Has (2) MP-200, a MP-100 & a MT-200 panels. DeForest metal tag on top. With (3) brass base, tipped tubes, filaments OK. Very nice condition.

[JVT#: 269] Estimate Low/High: 1000 / 2000



64. DeForest/Radio Craft. DT-600 Everyman Crystal Set. Crystal Set. With DeForest headphones. Tag in lid.

[JVT#: 766] Estimate Low/High: 200 / 500



## Session #2 - Auction - Terrey Collection of Vintage Radio

65. DeForest. DT-700 Radiophone. 1-tube regenerative set with reproduction lid label. With (1) coil. With (1) Bakelite base tube, filament OK. (Used with DT-800 Amplifier)

[JVT#: 60] Estimate Low/High: 400 / 800



69. DeForest. D-6 Receiver.. Regenerative receiver. With (3) brass base rainbow tubes, filaments good. Set in very good condition.

[JVT#: 272] Estimate Low/High: 250 / 500



66. DeForest. DT-800 Two-Stage Amp. 2-tube amplifier. With (2) Bakelite base UX201A tubes, filament OK. (Note: tubes corrected after photo.) (Used with DT-700 receiver)

[JVT#: 59] Estimate Low/High: 300 / 750



70. DeForest. D-7A Receiver. Has Transformers, probably original loop. Crystal assembly complete. With (3) Bakelite tubes, filament OK.

[JVT#: 764] Estimate Low/High: 300 / 800



67. DeForest. D-4 Radiohome. 1-tube receiver. With (1) Bakelite base UV201A, filament OK. (Used with D-5, JVT #275)

[JVT#: 274] Estimate Low/High: 200 / 500



71. DeForest. D-10 Receiver. With transformers, 4-tubes, display. Crystal assembly loose. One rheostat/knob incorrect. Probably original loop, but label fair. With extra knobs, rheostat & owner's manual copy. Cabinet very good. Label on lower door.

[JVT#: 276] Estimate Low/High: 300 / 1000



68. DeForest/Radio Craft/Radiophone. D-5 Two-Stage Amplifier. Unusual! 2-tube amplifier In upright cabinet with tag. With (2) brass base, tipped tubes, filament OK. Panel cracked in upper right corner. Case could use some repair.

[JVT#: 268] Estimate Low/High: 400 / 600



72. Dictograph Products Corp. Dictogrand Radio Horn Speaker. Tall.. Driver OK. 12" Bell, 26" tall.

[JVT#: 794] Estimate Low/High: 100 / 250



## Session #2 - Auction - Terrey Collection of Vintage Radio

73. Dictograph Products Corp. Dictogrand R-50 Roll Speaker. Unusual, rolled paper vibrates to produce sound output. Nice wood cabinet. Good driver.

[JVT#: 874] Estimate Low/High: 100 / 300



77. Dictograph Products Corp. Type R-3 Horn Speaker. With loudness adjuster. Label on bottom. Open driver. Hairline crack in bell.

[JVT#: 803] Estimate Low/High: 100 / 300



74. Dictograph Products Corp. Type R-12. Radio Loud Speaker - Horn Type. Black 11 3/4" bell, larger model. Driver OK. Very light crack in bell.

[JVT#: 802] Estimate Low/High: 200 / 400



78. Duck, Wm. B. & Bowman, A.W. Crystal Set with Scarce Duck Type "B" 5-Crystal Detector and Bowman Slide Tuner. Mounted on base. Detector is on page 40b, Duck Catalog 10. Missing cat whisker.

[JVT#: 909] Estimate Low/High: 250 / 650



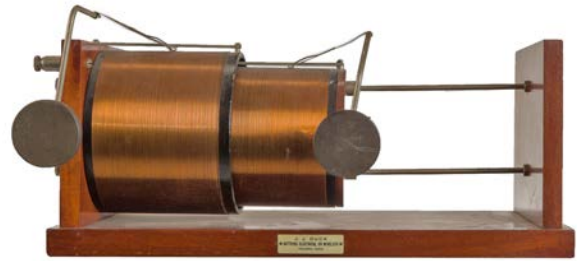
75. Dictograph Products Corp. Radio Loud Speaker - Horn Type. With loudness adjuster. Brass Bell. 1- 1/4" bell. Reads open through cord.

[JVT#: 799] Estimate Low/High: 100 / 300



79. Duck, J.J. Loose Coupler. Unusual. Linked arms controlled by knobs move the contacts against the coil winding. Similar to early Clapp-Eastham coupler.

[JVT#: 859] Estimate Low/High: 150 / 350



76. Dictograph Products Corp. Dictogrand Type R-4 Horn Speaker. With loudness adjuster. Driver OK.

[JVT#: 800] Estimate Low/High: 150 / 300



80. Duck, Wm. B. Loose Coupler. Navy Style. Greenwood Collection. Very good original condition.

[JVT#: 873] Estimate Low/High: 100 / 350



## Session #2 - Auction - Terrey Collection of Vintage Radio

81. Duck, Wm. B. Type A885 Receiver. 6-tube Receiver. Panel engraved: "Type A885 Receiver - The William B. Duck Co. - Radio Pioneers 1908-1925 - Toledo, Ohio". With (6) Bakelite base display tubes. (Note: The vertical smudge is almost unnoticeable on the shelf.)

[JVT#: 741] Estimate Low/High: 100 / 300



85. Electro Importing. Coherer Detector. Rare. Mounted on wood base, with Tapper. "E I CO NY" on tapper cover.

[JVT#: 902] Estimate Low/High: 150 / 350



82. Echophone. 3-tube flat front receiver. MFD. by the Radio Shop. With (3) Bakelite base UV99 display tubes. Very good condition.

[JVT#: 650] Estimate Low/High: 200 / 500



86. Electro Importing. Coherer Detector. Rare. Mounted on wood base. "ELECTRO IMPORT'G CO. NY" pressed into wood base.

[JVT#: 903] Estimate Low/High: 150 / 350



83. Eisemann Magneto Corp. (Broadway, NY). 3-tube Kit Set. Scarce. 3-tube receiver. No tubes. Very good condition.

[JVT#: 708] Estimate Low/High: 100 / 300



87. Electro Importing. Slide Tuner, Double. "E.I. CO. N.Y." on end plate. Good original condition.

[JVT#: 875] Estimate Low/High: 100 / 350



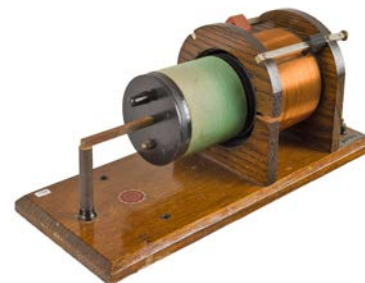
84. Eisemann Magneto Corp. (Broadway, NY). Scarce. Type 6 D. 5-Tube set. With (5) tubes, filament OK. Veneer on cover warped.

[JVT#: 712] Estimate Low/High: 100 / 350



88. Electro Importing. Loose Coupler. Rare! Wood Frame cracked and missing a small piece. Repairable.

[JVT#: 861] Estimate Low/High: 150 / 350



## Session #2 - Auction - Terrey Collection of Vintage Radio

89. Electrostatic Machine by Tassera, A., Grenoble. Wimshurst-type Machine - Large. Rotating disks, 22" in dia. Pulley on the handle appears added. Some brushes, etc. missing. An impressive example! Not working. BUYER MUST ARRANGE FOR PICKUP.

[JVT#: 913] Estimate Low/High: 800 / 3000



93. Eveready Columbia. Battery Display. Several stand-up pieces. Main display is 30 1/2" tall and a section is curved to form half of a No. 6 cell, 8 1/2" dia. Some panels mount on batteries. Some joints "tender", but in very good condition. Unique example of 1920s advertising.

[JVT#: 918] Estimate Low/High: 200 / 700



90. Electrostatic Machine by Womella Wimshurst-type Machine - Small. In the early 1900s, Heinrich Bernhard Felix Wommelsdorf, Germany, produced electrostatic machines with the brand name "Wommella." Rotating disks are 7" in diameter. Not tested.

[JVT#: 914] Estimate Low/High: 250 / 700



94. Fada 140-A Receiver. Scarce! 3-tube Receiver. Missing lid. Transformers probably replaced. Three extra screw holes in panel. with (3) Bakelite 01As, display.

[JVT#: 879] Estimate Low/High: 200 / 450



91. Electronic Demo. Apparatus. Geissler Tube Rotating Mount & Geissler tube.. Early motor operates on 6v. Includes Geissler tube.

[JVT#: 942] Estimate Low/High: 200 / 500



95. Fada Two Stage Amplifier. Scarce. Early. With blueprint on lid. No tubes. Good condition.

[JVT#: 878] Estimate Low/High: 150 / 450



92. Ericnella Sakes Co., San Francisco, Calif. Crystal Set. With instruction tag on bottom. Good condition.

[JVT#: 908] Estimate Low/High: 100 / 250



96. Federal Type 60. Rare. Tuner. Two-tuned circuits. Cover appears to be a nice reproduction. (Note: Screws removed for photos.)

[JVT#: 431] Estimate Low/High: 700 / 1500



## Session #2 - Auction - Terrey Collection of Vintage Radio

97. Federal Telephone & Telegraph Co. Type 8. Rare. Detector & One-Stage A.F. Amplifier. With (2) Bakelite tubes, filaments OK. Cover and base is a nice reproduction.

[JVT#: 845] Estimate Low/High: 800 / 1800



101. Federal Telephone & Telegraph Co. Jr.. Crystal Set. Very nice original finish.

[JVT#: 262] Estimate Low/High: 200 / 600



98. Federal Telephone & Telegraph Co. Type 9. Rare. Two-Stage A.F. Amplifier. With (2) Bakelite 01A tubes, one with good filament. Good condition. (Note: Screws removed for photos.)

[JVT#: 846] Estimate Low/High: 800 / 1800



102. Federal Telephone & Telegraph Co. Type 57. 4-tubes; 1-Stage RF Amplifier, Detector & 2-stage AF Amplifier. Very good front panel. Has R.F. transformer.

[JVT#: 252] Estimate Low/High: 150 / 450



99. Federal Telephone & Telegraph Co. Type 55. Rare. Two-Stage R.F. Amplifier. With (2) brass, tipped 01As, filaments OK. (Note: Screws removed for photos.)

[JVT#: 250] Estimate Low/High: 800 / 1800



103. Federal Telephone & Telegraph Co. DX-Type 58. 4-tubes; 1-Stage RF Amplifier, Detector & 2-stage AF Amplifier. Case & panel excellent. Has R.F. transformer.

[JVT#: 253] Estimate Low/High: 150 / 450



100. Federal Telephone & Telegraph Co. Type 56. Rare. One-Stage R.F. Amplifier & Detector. Needs some re-wiring & a transformer bracket. Reproduction base and cover. (Note: Screws removed for photos.)

[JVT#: 844] Estimate Low/High: 800 / 1800



104. Federal Telephone & Telegraph Co. Type 110. 3-tubes; 1-Stage RF Amplifier, Detector & 1-stage AF Amplifier. No tubes. Label in lid. Very good condition.

[JVT#: 258] Estimate Low/High: 300 / 800







*Federal Engineer, E.J. Clink's 5-tube prototype receiver. Lot 107.*



*Federal Engineer H.O. Roberts' 6-tube prototype receiver. Lot 108.*

## Session #2 - Auction - Terrey Collection of Vintage Radio

105. Federal Telephone & Telegraph Co. Type 159. "Gold-plated" Model 59. 4-tubes; 1-Stage RF Amplifier, Detector & 2-stage AF Amplifier. With (4) 01As, filaments OK. Cabinet & panel in good condition.

[JVT#: 257] Estimate Low/High: 600 / 1800



109. Federal - Bobby Richardson. Superhet. Unique. New Superhet made from vintage parts by "crop duster" radio collector Bobby Richardson, Texas. (9) tubes, (6) R.F. & (2) A.F. transformers.

[JVT#: 843] Estimate Low/High: 900 / 2500



106. Federal Telephone & Telegraph Co. Type 161. "Gold-plated" Model 61. 6-tubes; 3-Stages RF Amplifier, Detector & 2-stage AF Amplifier. With (4) Bakelite based 01As, filaments OK. Cabinet & panel very good.

[JVT#: 256] Estimate Low/High: 600 / 1800



110. Federal - Barnes Prototype(?) 1921. 3-tube set. By CD Barnes Co. Grand Rapids Mich. Probably a later "creation", but "interesting." With (3) brass, tipped display 01As.

[JVT#: 359] Estimate Low/High: 75 / 200



107. Federal - E.J. Clink. Unique! Prototype set by Federal engineer. 5-Tube receiver. With (6) tubes, (3) R.F. transformers & (2) older-style Federal A.F. transformers.

[JVT#: 841] Estimate Low/High: 600 / 1600



111. Federal Horn Speaker Type 180. Large, with 18" bell. Remnants of a radio section of a newspaper stuck on bell. Good driver.

[JVT#: 849] Estimate Low/High: 300 / 800



108. Federal - H.O. Roberts. Unique! Prototype set by Federal engineer. 6-Tube receiver. With (2) R.F. transformers.

[JVT#: 842] Estimate Low/High: 600 / 1600



112. Federal Horn Speaker Pleiophone No. 400-W. Small, 12" tall, 3 1/2" bell. Good driver.

[JVT#: 847] Estimate Low/High: 150 / 600



## Session #2 - Auction - Terrey Collection of Vintage Radio

113. Federal Horn Speaker, Pleiophone, Petaled. 10" petaled bell. Good driver.

[JVT#: 848] Estimate Low/High: 300 / 700



117. Freed-Eisemann. NR-7. Paper label on back. 6-tube set, No tubes. Good condition.

[JVT#: 632] Estimate Low/High: 75 / 150



114. Freed-Eisemann. Marvel Crystal Set. In wooden case with lid. Cabinet in fair to good condition.

[JVT#: 928] Estimate Low/High: 200 / 500



118. Freed-Eisemann. NR-12. Paper label on back. 4 Tube receiver. No tubes. Good condition.

[JVT#: 623] Estimate Low/High: 75 / 175



115. Freed-Eisemann. NR-5. With (5) tubes, filaments OK. Very good condition.

[JVT#: 635] Estimate Low/High: 75 / 150



119. Freed-Eisemann. NR-20. 5-tube receiver in drop front cabinet. Top lifts also. With (5) Bakelite tubes, filaments OK. Knob on drop front broken.

[JVT#: 634] Estimate Low/High: 100 / 300



116. Freed-Eisemann. NR-6. 5-tube receiver, no tubes. With paper label on back. Good condition.

[JVT#: 636] Estimate Low/High: 75 / 150



120. Freed-Eisemann. NR-45. With (6) 01A tubes, filaments OK. Very good condition.

[JVT#: 630] Estimate Low/High: 50 / 125



## Session #2 - Auction - Terrey Collection of Vintage Radio

121. Freed-Eisemann. FE-15. 5 tube Receiver. No tubes. Paper label on back. Good condition.

[JVT#: 631] Estimate Low/High: 50 / 150



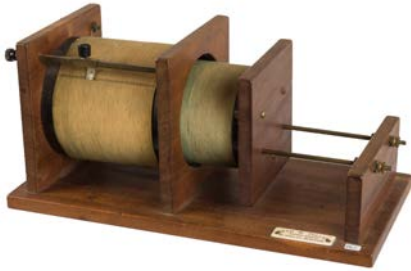
125. General Apparatus Co. Universal Tuner. Scarce. Single circuit tuner. Also ref: Sleeper Radio Construction Sets Catalog.

[JVT#: 156] Estimate Low/High: 75 / 200



122. Fuller, W. Seth Loose Coupler. Scarce! Has slide on coil. Nice tag: "Seth W. Fuller - Electrical Apparatus - 97 Arch St., Boston"

[JVT#: 860] Estimate Low/High: 100 / 300



126. General Apparatus Co. A23. "3-tubes; Detector, 2-stage AF amplifier." No tubes. Very good condition.

[JVT#: 151] Estimate Low/High: 75 / 200



123. General Apparatus Co. A6. 1-tube AF amplifier. No tube or cabinet. Very good condition.

[JVT#: 152] Estimate Low/High: 75 / 200



127. General Apparatus Co. Regenerative Receiver - "Double Decker". Single circuit tuner. Regenerative receiver kit: \$14.57; Detector/2-step AF amplifier kit: \$24.82. Units slide-in cabinet, unusual construction.

[JVT#: 157] Estimate Low/High: 75 / 200



124. General Apparatus Co. A5. 1-tube Detector in cabinet.

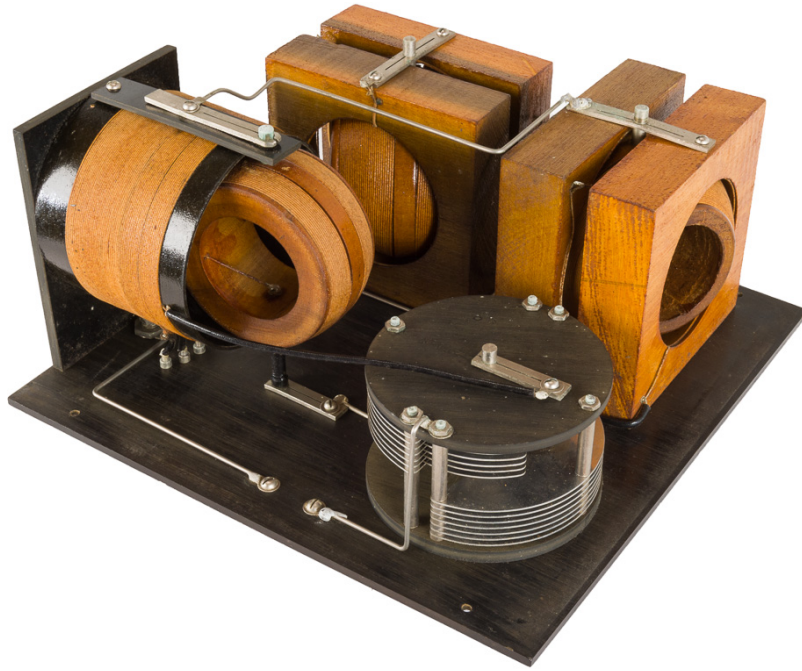
[JVT#: 153] Estimate Low/High: 75 / 200



128. General Radio Scarce. Type 206 1-Step Audio Amp.. SN 130. Wood cabinet. Diagram on lid. Very good condition.

[JVT#: 438] Estimate Low/High: 75 / 200





*The rare Grebe CR-4 tuner. Lot 135.*

## Session #2 - Auction - Terrey Collection of Vintage Radio

129. General Radio Scarce. Type 215 2-Step Audio Amp.. SN 173, Wood cabinet. Lid is warped.

[JVT#: 437] Estimate Low/High: 75 / 200



133. Grebe CR-2, early. Tuner. Has Clutch style knobs. Very good condition.

[JVT#: 207] Estimate Low/High: 600 / 1500



130. Golden Leutz Corp. Plidyne-6. 6-Tube TRF. with (6) Bakelite base tubes, filament OK. Very good condition, nice metal tag.

[JVT#: 70] Estimate Low/High: 75 / 150



134. Grebe CR-3 Special, early. Tuner with wooden variometers, Clutch style knobs. Very good condition. Unique set: panel engraving is incomplete, probably a factory error. The "S" in "Special" has a connected scratch and the word was not completed. Also not engraved are "Trade Mark" & "Type CR-3".

[JVT#: 210] Estimate Low/High: 600 / 2000



131. Grebe TGAC Rotary Spark Gap Wireless Transmitter. Mounted on a board: Grebe TGAC rotary spark gap, Crocker-Wheeler motor, Acme Type F-1 Transformer, RCA Oscillation Transformer Model 1008 & Pacent Capacitor & key. BUYER MUST ARRANGE FOR PICKUP.

[JVT#: 866] Estimate Low/High: 500 / 4000



135. Grebe CR-4. Rare. Regenerative Tuner. Has Clutch style knobs. Very good condition.

[JVT#: 213] Estimate Low/High: 6000 / 12000



132. Grebe CR-1. Rare. 1-tube regenerative receiver. With (1) Brass, tipped UV-201A, filament OK. Very good condition.

[JVT#: 227] Estimate Low/High: 6000 / 12000



136. Grebe CR-5, early. 1-tube regenerative. External tube. With (1) brass base, tipped tube, filament OK. Has Armstrong Patent tag on lid. Good condition.

[JVT#: 214] Estimate Low/High: 1500 / 6000



## Session #2 - Auction - Terrey Collection of Vintage Radio

137. Grebe CR-6. Early Model. Rare. 3-tube regenerative receiver. 3 Brass display tubes. Has Armstrong Patent tag on lid. This set is pictured in Douglas "Radio Manufacturers..." Vol. 2, page 55.

[JVT#: 215] Estimate Low/High: 6000 / 12000



141. Grebe RORN. Tuned radio amplifier with (3) "output" coils, early version. with original instruction book (fair cond.) Set in very good condition.

[JVT#: 240] Estimate Low/High: 700 / 1500



138. Grebe CR-7. Rare. 1-tube, long wave regenerative receiver. The single tube is exposed, brass base, filament OK. Has Armstrong Patent tag on lid. Has "Muchow Historical Radio Museum" tag. Note: The two "spots" on the upper left of the panel are mounting screws for coils on the rear of the panel.)

[JVT#: 217] Estimate Low/High: 6000 / 12000



142. GREBE RORN Coils (2). (2) Bakelite encased coils for Grebe RORN, No. 2 and No. 4.

[JVT#: 622] Estimate Low/High: 100 / 400



139. Grebe CR-8. 1-tube, regenerative receiver With veneer coupling knob. Has Armstrong Patent tag on lid. Very good condition.

[JVT#: 219] Estimate Low/High: 200 / 600



143. Grebe Clarifier. Tuned radio amplifier. With pick up coil. Excellent condition.

[JVT#: 241] Estimate Low/High: 300 / 900



140. Grebe CR-9. 3-tube set with Original Box. Has Armstrong Patent tag on lid. Excellent condition. Serial number on front panel, No. 7396, matches one on box.

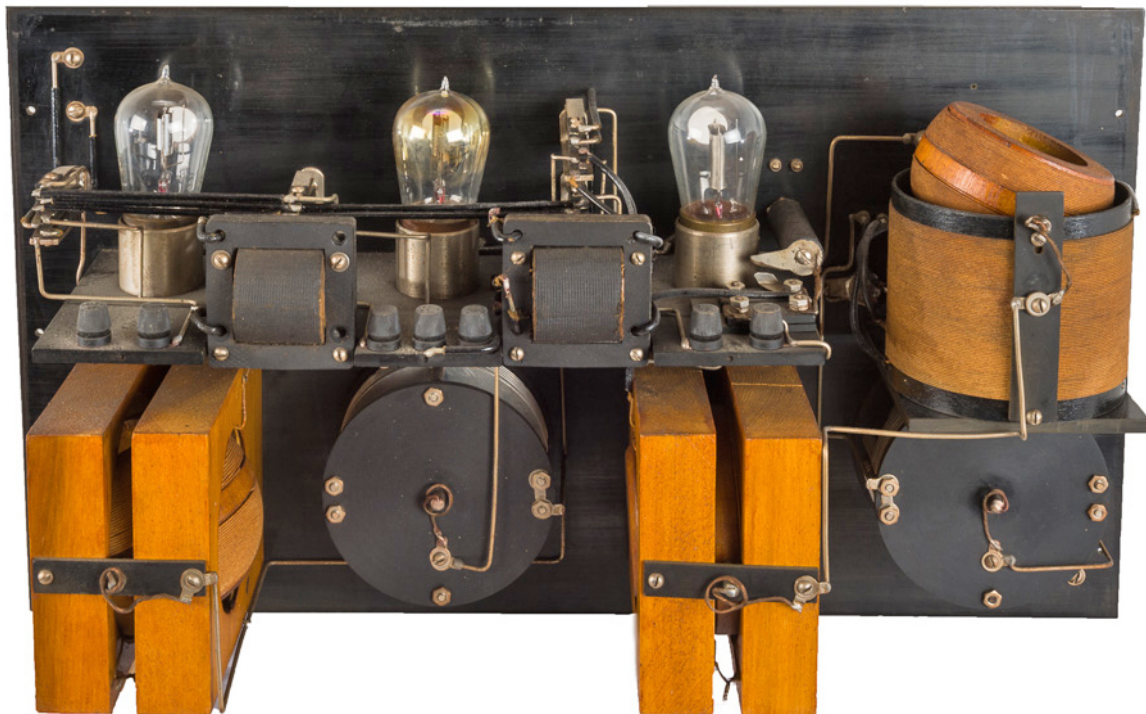
[JVT#: 936] Estimate Low/High: 250 / 600



144. Grebe CR-10, Early. Rare. 4-tube radio, with speaker, in floor phonograph-style cabinet. Set has a CR-5 plus a 3-tube RORO Amp. "Radiotone" tag. With (4) 01As, filaments OK. Cabinet good cond., but non-original grille cloth. BUYER MUST ARRANGE FOR PICKUP.

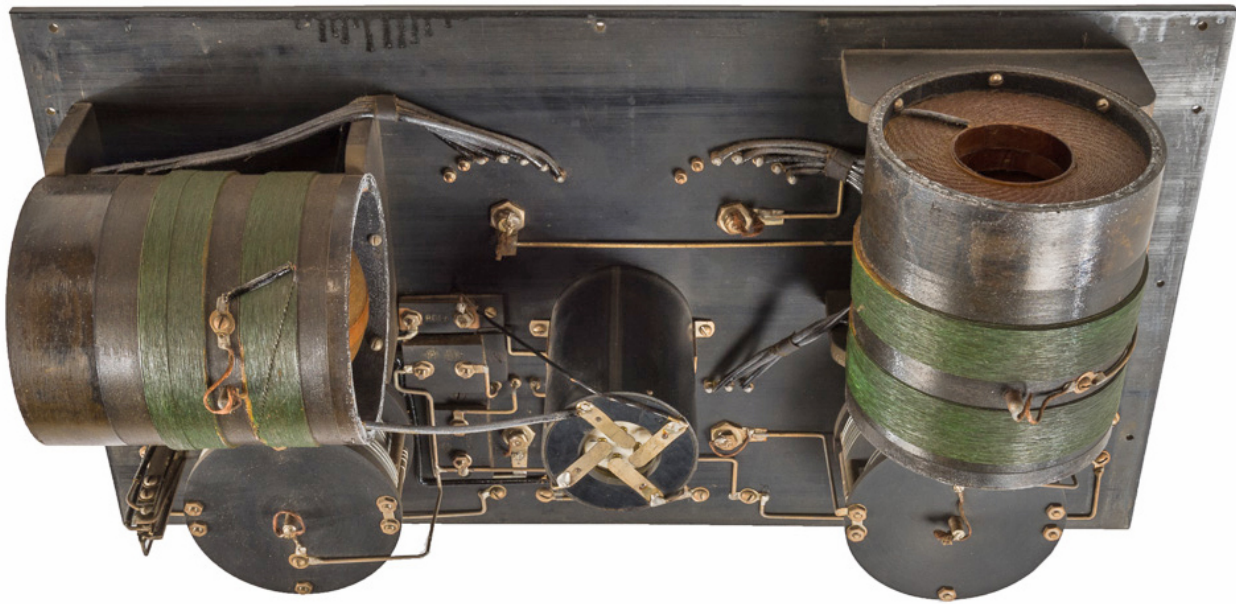
[JVT#: 336] Estimate Low/High: 6000 / 12000



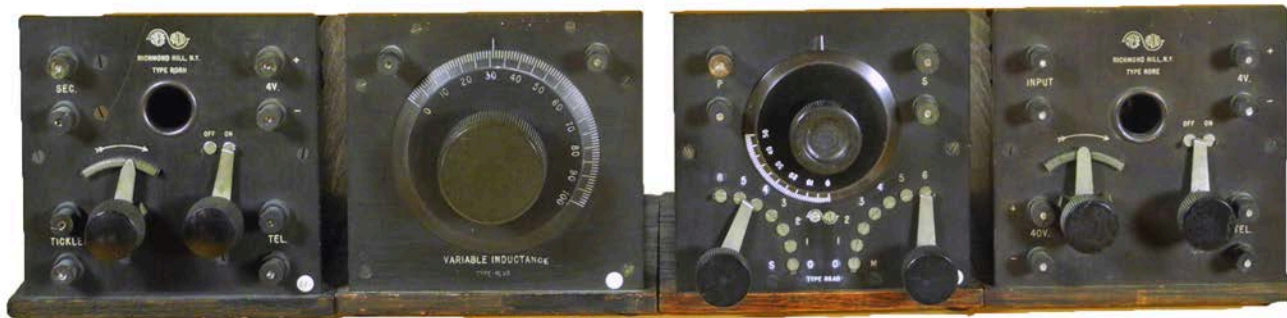
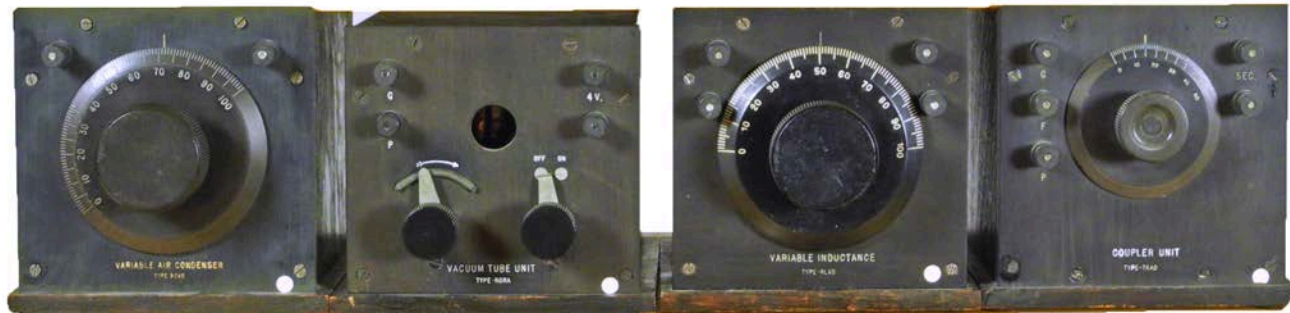
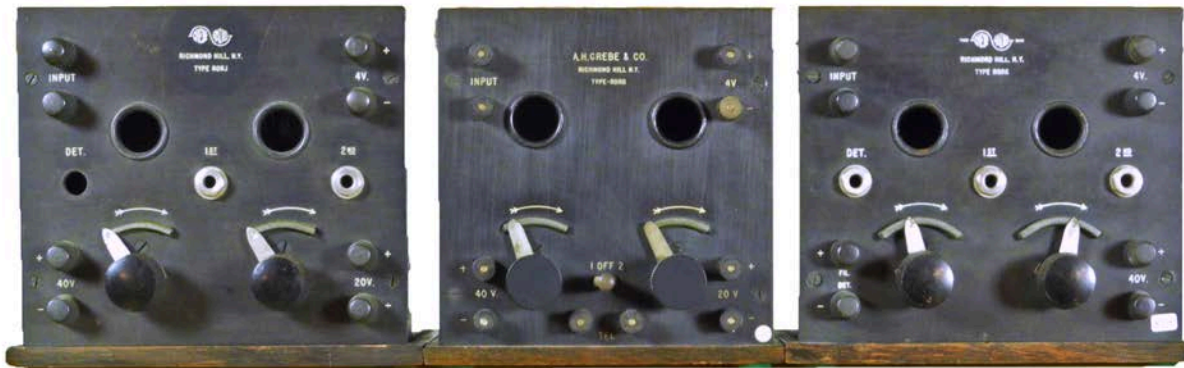
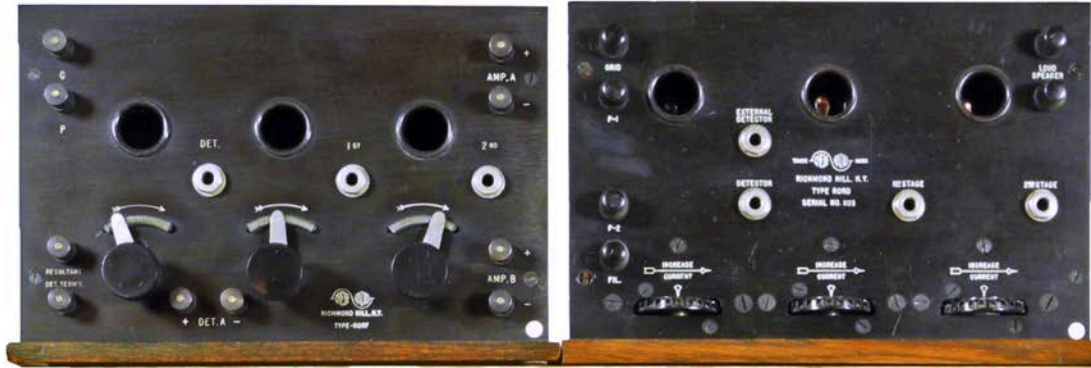


*The early version of the Grebe CR-6 receiver. Lot 137.*





*The rare Grebe CR-7 long wave regenerative receiver. Lot 138.*



*Grebe small boxes — it is unusual to see this many together.  
 Top to bottom, left to right: RORF, RORD, RORJ, RORB, RORK,  
 RCVC, RORA, RLVD, TKAD, RORH, RLVB, RKAB, RORE.  
 Lots 149 -156, Lots 158 - 162.*

## Session #2 - Auction - Terrey Collection of Vintage Radio

145. Grebe CR-12. 4-Tube receiver. The top is slightly warped and looks worse in photo than it is. With (4) Bakelite display tubes. Panel is very good.

[JVT#: 222] Estimate Low/High: 200 / 800



149. Grebe RORA, early. Rare! 1-tube unit. With RCA brass base/tipped UV-200, good filament. External rheostats. Good original condition.

[JVT#: 206] Estimate Low/High: 300 / 700



146. Grebe CR-13. 2-Tube short-wave receiver. Has Armstrong Patent tag on lid. Very good condition.

[JVT#: 223] Estimate Low/High: 600 / 1500



150. Grebe RORB. 2-tube unit audio amplifier. External rheostats. Very good original condition.

[JVT#: 228] Estimate Low/High: 300 / 700



147. Grebe CR-14. With (3) brass base tubes, filament OK. Very good condition.

[JVT#: 224] Estimate Low/High: 600 / 1500



151. Grebe RORD, late. 3-tube unit detector & 2-stage audio amplifier. 3 display tubes. Very good condition.

[JVT#: 231] Estimate Low/High: 400 / 900



148. Grebe CR-18 Special. With 6 coils (likely Grebe). Very good condition.

[JVT#: 226] Estimate Low/High: 1000 / 2500



152. Grebe RORE. 1-tube unit audio amplifier. External rheostats. With (1) Moorhead display tube. Good condition.

[JVT#: 229] Estimate Low/High: 300 / 600



## Session #2 - Auction - Terrey Collection of Vintage Radio

153. Grebe RORF. 3-tube unit detector & 2-stage audio amplifier. External rheostats. Very good condition.

[JVT#: 230] Estimate Low/High: 600 / 1500



157. Grebe 3-Coil tuner. Unknown if Grebe. Missing one binding post nut.

[JVT#: 335] Estimate Low/High: 200 / 500



154. Grebe RORH. 1-tube unit detector. External rheostats. Light crack on panel to left of peep hole.

[JVT#: 232] Estimate Low/High: 400 / 900



158. Grebe RCVC. Self-balanced variable air condenser unit. Good condition.

[JVT#: 236] Estimate Low/High: 300 / 800



155. Grebe RORJ. Detector, 2-Stage Amp. External rheostats. Very good condition.

[JVT#: 332] Estimate Low/High: 800 / 1500



159. Grebe RKAB. Very scarce. Variable coupler unit. Very good condition.

[JVT#: 234] Estimate Low/High: 300 / 800



156. Grebe RORK, early. 2-Stage A.F. Amp. External rheostats. Good condition.

[JVT#: 834] Estimate Low/High: 300 / 700



160. Grebe RLVB. Variable inductance unit. Good condition.

[JVT#: 237] Estimate Low/High: 300 / 800



## Session #2 - Auction - Terrey Collection of Vintage Radio

161. Grebe RLVD. Variable inductance unit. Good condition.

[JVT#: 238] Estimate Low/High: 300 / 800



165. Grebe Synchrophase MU-1. With "Nickel" escutcheons. No tubes. Missing chains.

[JVT#: 609] Estimate Low/High: 300 / 800



162. Grebe TKAD. Coupler unit. Good condition. From Muchow Museum.

[JVT#: 235] Estimate Low/High: 300 / 800



166. Grebe Synchrophase 7. 7-tube set. With tubes. Very good condition.

[JVT#: 246] Estimate Low/High: 100 / 400



163. Grebe RPDB. Very rare. Crystal detector. On marble base.

[JVT#: 239] Estimate Low/High: 350 / 1500



167. Grebe Model 89 Cathedral. AC set. Dr. Mu embossed on dial escutcheon. Refinished cabinet. Uses (2) Type 59 tubes for audio output.

[JVT#: 757] Estimate Low/High: 150 / 450



164. Grebe Synchrophase with Battery Box. With "gold" escutcheons. 5-tube set without tubes. Missing chains.

[JVT#: 244] Estimate Low/High: 400 / 900



168. Grebe Console Model 21950. Supersynchrophase 7-tube set. (See Douglas Vol. 2, pg. 67). (2) chassis. Fair condition. BUYER MUST ARRANGE FOR PICKUP.

[JVT#: 247] Estimate Low/High: 100 / 500



## Session #2 - Auction - Terrey Collection of Vintage Radio

169. Grebe Synchrophase AC 6 in Highboy Console Cabinet. Cabinet in fair-good condition. BUYER MUST ARRANGE FOR PICKUP.

[JVT#: 761] Estimate Low/High: 75 / 350



173. Grimes, David The Tri-Tube Type V-5. 5-tube receiver.

[JVT#: 702] Estimate Low/High: 50 / 125



170. Grebe Synchrophase MU-1, Andalusia Console Cabinet. With build-in speaker but missing driver. Cabinet in fair-good condition. Missing rear panel. BUYER MUST ARRANGE FOR PICKUP.

[JVT#: 762] Estimate Low/High: 75 / 350



174. Hoag radio N-4. 2 Bakelite tubes, display. Paperwork with set claims that about 200 sets were made. With Hoag radio log. Very good condition.

[JVT#: 511] Estimate Low/High: 100 / 300



171. Grebe Display - 3-Panel Dr. Mu. 3-segment, wooden display. Painted green, yellow, white with black lettering. By Leonard Wades, signed. Approximately 26 1/2" x 42" wide. (The Grebe CR-4 in the second photo is not included with this item.)

[JVT#: 837] Estimate Low/High: 200 / 600



175. Horne Mfg. Co. Receiver and Amplifier. 1-Tube receiver and separate 2-tube amplifier. With (3) Bakelite base tubes, filament OK.

[JVT#: 772] Estimate Low/High: 250 / 700



172. Grebe Display - Synchrophase Sets. Three standup displays. "What Grebe Binocular Coils Do for you", "S-L-F Condensers", "Get Over 100 Stations not tuned by others". About 9" x 13", 12" x 14" and 18" x 11 1/2".

[JVT#: 836] Estimate Low/High: 100 / 250



176. Herald Long Distance Regenerative Receiver. 3-tubes. Detector, 2-stage AF amplifier.

[JVT#: 170] Estimate Low/High: 75 / 225



## Session #2 - Auction - Terrey Collection of Vintage Radio

177. Home Brew Neat, 2-Tube breadboard style receiver.. 2-tube regenerative set. With (2) New York Coil variometers, (1) Acme R-3 R.F. Transformer. With (2) Bakelite base tubes, filaments OK. Nice craftsmanship.

[JVT#: 605] Estimate Low/High: 100 / 350



181. Jewell Crystal Set. On panel: "J.K. Corp". Very good original condition.

[JVT#: 894] Estimate Low/High: 100 / 250



178. Home Brew Portable Wireless Outfit. In case. Includes slide tuner, loose coupler, buzzer, fixed detector (non-original), with (2) Western Electric No. 6 batteries.

[JVT#: 951] Estimate Low/High: 100 / 400



182. Jewett A-B-C Standardized Crystal Set. With (2) honeycomb adjustable coils. Uncommon!

[JVT#: 924] Estimate Low/High: 300 / 800



179. Ideal Mfg. Corp., Tampa, Florida Wizzard Portable Aerial. Unusual wooden box containing aerial. "Safe - Efficient - Economical". About 9" x 9" x 3". Nice metal tag. Very good condition.

[JVT#: 539] Estimate Low/High: 75 / 225



183. Jewett Radio & Phonograph Co. SuperSpeaker - Horn Speaker. Driver OK measured through modern cord.

[JVT#: 797] Estimate Low/High: 75 / 300



180. Insuline Corp. of America (ICA) Crystal Set. With enclosed detector. ICA label on top and simple hook up diagram on bottom.

[JVT#: 907] Estimate Low/High: 100 / 250



184. Jones/Kellogg, Chicago Symphony, 3 tube. "The Receiver of Tomorrow". Jones sets were manufactured by Kellogg Switchboard & Supply, Chicago. With (3) 01As, filaments OK.

[JVT#: 612] Estimate Low/High: 250 / 700



## Session #2 - Auction - Terrey Collection of Vintage Radio

185. Jones/Kellogg, Chicago Symphony, 4 tube. "The Receiver of Tomorrow". Jones sets were manufactured by Kellogg Switchboard & Supply, Chicago. Has metal Armstrong Patent tag.

[JVT#: 613] Estimate Low/High: 250 / 700



189. Kellogg 70-A Horn Speaker. Trumpet-style horn speaker. 11 1/2" bell. good driver.

[JVT#: 885] Estimate Low/High: 100 / 300



186. Jones/Kellogg, Chicago The Symphony Panel Set. Mounted in a frame for display. "The Receiver of Tomorrow". Jones sets were manufactured by Kellogg Switchboard & Supply, Chicago. With (3) UX201As, filaments OK in (2).

[JVT#: 808] Estimate Low/High: 100 / 300



190. Kellogg The Symphony Horn Speaker. 21" high, 15" bell. Good driver.

[JVT#: 886] Estimate Low/High: 100 / 300



187. Jones Radio Co. (Brooklyn, NY) 1-Tube Receiver. Scarce. Has tube out front. (1) brass base tipped Moorhead tube, filament good. Very good condition.

[JVT#: 640] Estimate Low/High: 200 / 500



191. Kellogg Sign - "Radio Sets by Kellogg". Glass standup sign. About 12 1/2" wide x 5 1/2" high sign mounted on a 1" high stand. Gold, silver and orange on a black background. "Radio Sets by Kellogg - - Flawless Reproduction"

[JVT#: 835] Estimate Low/High: 50 / 200



188. Justus Berge Portable. Very scarce! 6-tube suitcase-style portable. Upright horn is removable to close case. Tubes untested. 1/4" hole in center of panel.

[JVT#: 872] Estimate Low/High: 100 / 200



192. Kemper, Los Angeles K-5-2 Portable. Upright Suitcase style with antenna stored in rear lid. Case in good condition, panel in excellent condition.

[JVT#: 868] Estimate Low/High: 100 / 300





## Session #2 - Auction - Terrey Collection of Vintage Radio

193. Kemper, Los Angeles K-5-3 Portable. Upright Suitcase style with antenna stored in rear lid. Case in very good condition, panel in excellent condition.

[JVT#: 869] Estimate Low/High: 100 / 300



197. Kennedy Co. Colin B. (Portal Co., E.A.) RF Amp. San Francisco E.A. Portal was an engineer with Kennedy and managed Kennedy's radio station 6XAC. With (2) UV99, (1) filament OK.

[JVT#: 191] Estimate Low/High: 400 / 1300



194. Kennedy Co. Colin B. Type 110 Universal Receiver. San Francisco Factory. Lid slightly warped, otherwise in very good condition. With (1) brass base UV201A, filament OK.

[JVT#: 181] Estimate Low/High: 700 / 1700



198. Kennedy Co. Colin B. Type 220 Intermediate Wave Receiver. San Francisco Factory. with (1) brass base tube, filament OK. Very good condition.

[JVT#: 184] Estimate Low/High: 300 / 1000



195. Kennedy Co. Colin B. Type 110 Universal Receiver. Saint Louis Factory. With (1) brass base, tipped tube, filament OK. Very good condition.

[JVT#: 183] Estimate Low/High: 700 / 1700



199. Kennedy Co. Colin B. Type 220 Intermediate Wave Receiver. Saint Louis Factory. With (1) brass base tube, filament OK. Good condition.

[JVT#: 186] Estimate Low/High: 300 / 1000



196. Kennedy Co. Colin B. Type 525 Two Stage Amplifier. Saint Louis Factory. With (2) Bakelite base tubes, filament OK. Very good condition.

[JVT#: 187] Estimate Low/High: 300 / 600



200. Kennedy Co. Colin B. Type 281 Short Wave Receiver. Saint Louis Factory. 1 Brass based tube, filament okay. Metal tag inside lid.

[JVT#: 189] Estimate Low/High: 350 / 750



## Session #2 - Auction - Terrey Collection of Vintage Radio

201. Kennedy Co. Colin B. Type 521 Two Stage Amplifier. Saint Louis Factory. With 2 brass based 01As, filaments OK.

[JVT#: 190] Estimate Low/High: 300 / 650



205. Kennedy Co. Colin B. Type XI. Scarce Radio! 4-tube receiver with built-in speaker. Mahogany cabinet with satinwood and ebony inlays. Excellent condition.

[JVT#: 327] Estimate Low/High: 600 / 2000



202. Kennedy Co. Colin B. Type 311 with 522 Amplifier Portable. Scarce! 1-tube detector with 2-tube AF amplifier in portable cabinet. Has instructions in lid. with (3) brass, tipped 01As, untested.

[JVT#: 326] Estimate Low/High: 700 / 1500



206. Kennedy Co. Colin B. Type XV. 5-tube receiver, slant front. With (5) Bakelite base tubes, filament OK. Good condition.

[JVT#: 195] Estimate Low/High: 400 / 800



203. Kennedy Co. Colin B. Type V. 3-tube receiver. slant front. With (3) Bakelite base tubes, (2) filament OK, (1) display. Has paper label inside lid.

[JVT#: 194] Estimate Low/High: 250 / 600



207. Kennedy Co. Colin B. Horn Speaker. 18" high, 11" bell. Good driver.

[JVT#: 851] Estimate Low/High: 200 / 600



204. Kennedy Co. Colin B. Type VI. With (4) brass based display tubes. Tube socket shock mounts poor, otherwise, in very good condition.

[JVT#: 611] Estimate Low/High: 400 / 700



208. Knott, L.E. Horn Speaker. Driver and field have good continuity. Small dent in horn near base.

[JVT#: 798] Estimate Low/High: 100 / 300



## Session #2 - Auction - Terrey Collection of Vintage Radio

209. Kodel "Microphone" Loud Speaker. Looks like a microphone. 9" high, 6 1/2" diameter. Open driver.

[JVT#: 629] Estimate Low/High: 100 / 350



213. Kodel C-12. 2-tube receiver in leatherette covered wood cabinet. No tubes. Excellent original condition.

[JVT#: 497] Estimate Low/High: 100 / 300



210. Kodel S-1 Crystal Set. Crystal Set in leatherette covered wood cabinet. Slant front. Very good condition.

[JVT#: 494] Estimate Low/High: 100 / 300



214. Kodel C-112. 2-tube receiver in wood cabinet. With (2) UV99 tubes, filaments OK. Includes operating instructions, warranty card and Lowe Brothers "Famous Composers Programs" weekly program listing for numerous radio stations. Note: Smudge under upper left knob is remnant of a sticker, cleanable, otherwise good condition.

[JVT#: 495] Estimate Low/High: 100 / 300



211. Kodel P-11. Scarce! 1-tube portable receiver in leatherette covered wood cabinet. No tubes. Front folds down, rear swings open. Has handle. Very good condition.

[JVT#: 493] Estimate Low/High: 100 / 300



215. Kodel C-13. 3-tube receiver in leatherette covered wood cabinet. With (3) Bakelite base tubes, filament OK. With terminal ID tag on back.

[JVT#: 491] Estimate Low/High: 100 / 300



212. Kodel C-11. 1-tube receiver in leatherette covered wood cabinet. Has "hook-up" tag on back. w/1 tube, filament OK.

[JVT#: 496] Estimate Low/High: 100 / 300



216. Kodel C-14. 4-tube receiver in leatherette covered wood cabinet. Has "hook-up" tag on back. w/4 tubes, untested.

[JVT#: 492] Estimate Low/High: 100 / 300



## Session #2 - Auction - Terrey Collection of Vintage Radio

217. Kodel Log-O-Dyne Unitrola. Scarce radio. 5-Tube receiver with ornate silk screened chassis. Slant front. With (5) Bakelite base display tubes.

[JVT#: 652] Estimate Low/High: 75 / 200



221. Merchant Radio Co. Tuner and Detector/Amplifier, 2 Cabinets. Two-piece receiver with blueprint for pair. With (3) Bakelite base tubes, filament OK. Audios possibly replaced. Good condition.

[JVT#: 755] Estimate Low/High: 200 / 600



218. Lawsam Electric Co. Tom Brown's own Radio Set. Scarce. With top of box and instructions. With (1) Bakelite base tube, filament OK.

[JVT#: 86] Estimate Low/High: 100 / 300



222. Mitchell Co., R. SE-AR-DE Type AD Short Wave Receiver. Scarce. 1-tube set, no tubes. (SE-AR-DE sets were available with or without the cabinet, so cabinet originality unknown.)

[JVT#: 159] Estimate Low/High: 100 / 300



219. Long Distance Wireless Instrument Co. Loose Coupler. Scarce. Interesting sliding coil contact adjustment. Boston, Mass.

[JVT#: 855] Estimate Low/High: 150 / 350



223. Mitchell Co., R. SE-AR-DE Type AD2 short Wave Receiver. 3-tube set, no tubes. (SE-AR-DE sets were available with or without the cabinet, so cabinet originality unknown.)

[JVT#: 160] Estimate Low/High: 100 / 300



220. Louisville Electric Mfg. Co., Louisville, Ky. Crystal Set. Open detector on top. Manufacturer name on knob.

[JVT#: 893] Estimate Low/High: 100 / 250



224. Mitchell Co., R. SE-AR-DE Type AF 1-Step Amplifier. 1-tube set, no tubes. Panel & cabinet in good to very good condition. (SE-AR-DE sets were available with or without the cabinet, so cabinet originality unknown.)

[JVT#: 163] Estimate Low/High: 100 / 300



## Session #2 - Auction - Terrey Collection of Vintage Radio

225. Mitchell Co., R. SE-AR-DE Type AF 2-Step Amplifier. 2-tubes. Panel very good. (SE-AR-DE sets were available with or without the cabinet, so cabinet originality unknown.)

[JVT#: 164] Estimate Low/High: 100 / 300



229. Musio Radio Co., Pittsburgh, Pa. Musio Crystal Set. Crystal detector is behind the panel but adjusted with a knob through the panel. Unusual.

[JVT#: 891] Estimate Low/High: 100 / 250



226. Mitchell Co., R. SE-AR-DE Type BD2 Receiver. 3-tube set. Excellent condition. No tubes. (SE-AR-DE sets were available with or without the cabinet, so cabinet originality unknown.)

[JVT#: 161] Estimate Low/High: 100 / 300



230. Midget Radio Co., Pittsburg, Pa. Midget Crystal Set. Small crystal with sliding glass cover over works.

[JVT#: 899] Estimate Low/High: 100 / 250



227. Marshall-Gerken Co. (MGCo) Type AW-2 One-stage Amp. Rare. Small. No cabinet.

[JVT#: 925] Estimate Low/High: 100 / 300



231. Michigan Radio Corp. Junior. 1-Tube receiver. With (1) Bakelite base tube, filament OK. Cabinet good condition. Panel very good condition.

[JVT#: 660] Estimate Low/High: 100 / 300



228. Monte Carlo Co. BroadCatcher. Crystal Set in small case with lid.

[JVT#: 555] Estimate Low/High: 100 / 250



232. Michigan Radio Corp. Midget. 1-Tube Receiver. Slant front. With (1) Bakelite base display tube. Mfg by Klitzen. Metal tag inside lid.

[JVT#: 659] Estimate Low/High: 100 / 300



## Session #2 - Auction - Terrey Collection of Vintage Radio

233. Michigan Radio Corp. Senior. 3-Tube receiver. With (3) Bakelite base tubes, filament OK. Cabinet & panel in very good condition.

[JVT#: 661] Estimate Low/High: 150 / 350



237. Midwest Radio Miraco Model R-3. 3-Tube receiver. With (3) Bakelite base tubes, filament OK. Lid slightly warped. Decal intact.

[JVT#: 749] Estimate Low/High: 100 / 300



234. Midwest Radio Miraco 2-Step Amp. 2-Tube Amplifier. With (2) Bakelite base tubes, filament OK. Lid slightly warped. Decal mostly intact.

[JVT#: 748] Estimate Low/High: 200 / 400



238. Midwest Radio Miraco Ultra 5 - Early. 5-tube receiver. Label remnants on back of cabinet. With (5) Bakelite base tubes, filament OK. Decal partially missing. (Note: Glare on left side of panel is from lighting.)

[JVT#: 750] Estimate Low/High: 100 / 300



235. Midwest Radio Miraco Model K. 2-tube receiver. No tubes. Panel decal partially missing.

[JVT#: 746] Estimate Low/High: 100 / 300



239. Main, W.F., Radio Co. Splendid-Grand Radio Receiver. 3-Tube Set. Uses (2) "hedgehog" small audios.

[JVT#: 78] Estimate Low/High: 100 / 175



236. Midwest Radio Miraco Model MW. 4-tube receiver. With (4) Bakelite base tubes, filament OK. Decal mostly missing.

[JVT#: 747] Estimate Low/High: 100 / 300



240. Menotomy Radio Co. (Arlington, MA) Amplifex. 5-tube receiver. Entire cabinet (top, sides, rear) open and lift upward. With (5) Bakelite base tubes, filament OK. Excellent condition.

[JVT#: 656] Estimate Low/High: 100 / 300



## Session #2 - Auction - Terrey Collection of Vintage Radio

241. Montgomery Ward Detector & 2-Stage Amp. Scarce. Similar to small Fada units. Very good condition.

[JVT#: 877] Estimate Low/High: 100 / 300



245. Murdock, Wm. J. Loose Coupler. Outer coil is copper wire. Sliding coil is green cotton coated. Some turns loose. Fair condition.

[JVT#: 858] Estimate Low/High: 150 / 350



242. Music Master Horn Speaker - Large. 21" mahogany bell. Measures 1.3K. One split in bell, repairable.

[JVT#: 795] Estimate Low/High: 300 / 700



246. Murdock, Wm. J. Crystal set. Murdock components crystal detector adjustable coil headphones. Metal tag on base. Very good condition.

[JVT#: 626] Estimate Low/High: 150 / 300



243. Manhattan Symphonic Horn Speaker. Horn folded and enclosed in decorative wood cabinet. Very good original condition. Driver OK.

[JVT#: 532] Estimate Low/High: 80 / 200



247. Marconi Wireless Telegraph of America Magnetic Detector. Iron belt driven by clock-type mechanism, used to detect RF signals. Untested. Missing one binding post. Ford Museum Deaccession. Spring OK. Missing drawer.

[JVT#: 294] Estimate Low/High: 6000 / 12000



244. Murdock Horn Speaker. Bell is megaphone shape, 7.25" opening, 12" long. Good driver.

[JVT#: 786] Estimate Low/High: 100 / 250



248. Navy-Wireless Specialty Apparatus Co. SE-1220 (IP -500). U.S. Navy medium wave receiver. Good original condition. S/N 194H. Includes original Navy Washington Navy Yard manual (some pages loose.)

[JVT#: 347] Estimate Low/High: 1000 / 3000



## Session #2 - Auction - Terrey Collection of Vintage Radio

249. Navy-Wireless Specialty Apparatus Co. SE-1071. 1-Tube detector. With (1) Brass base base, tipped tube, filament OK. No tag. Missing some panel screws. Panel in good original condition.

[JVT#: 348] Estimate Low/High: 1000 / 3000



253. Oro-Tone Shell Speaker-Replica. Floyd Paul Collection-pg.48 in "Radio horn speaker" book. Signed provenance by Floyd Paul Feb 1992. Good driver.

[JVT#: 558] Estimate Low/High: 50 / 200



250. Navy-Westingshouse SE-1012A. U.S. Navy radio compass receiver, Bureau of Steam Engineering. Crystal detector & 1-tube. S/N 107-AY, date 1918. With (1) VT-1 tube filament OK. Several filled holes on top of cabinet. Detector may be a reproduction. Remnants of Dymo label on top. Panel finish discolored.

[JVT#: 353] Estimate Low/High: 1500 / 3000



254. Ozarka 4-tube set.. 4-tube, slant panel receiver. Includes (4) Bakelite base 199 tubes, display. Missing several screws on front panel. Good condition.

[JVT#: 721] Estimate Low/High: 150 / 450



251. Navy-National Electric Supply Co. CN-113. Made for Bureau of Steam Engineering. S/N 366, dated 1917. With detector. Very good condition.

[JVT#: 354] Estimate Low/High: 900 / 2000



255. Ozarka Junior J-1. 5-tube slant panel receiver. With (5) Bakelite base tubes, filament OK. Grille cloth loose/rippled. Good condition.

[JVT#: 733] Estimate Low/High: 50 / 200



252. Nichols Electric Co. Crystal Set. Rare. With slide tuner and buzzer. Has metal tag.

[JVT#: 906] Estimate Low/High: 400 / 1100



256. Ozarka Portable. Suitcase style. 3-tube set. Long wire loop antenna coiled in lid. Good condition.

[JVT#: 871] Estimate Low/High: 100 / 300







***Philco Model 512 AC Receiver and speaker, with decorative stand and chair. Lot 262.***

## Session #2 - Auction - Terrey Collection of Vintage Radio

257. Ozarka Senior. 5-Tube receiver with battery compartment on bottom. No tubes. Good condition.

[JVT#: 724] Estimate Low/High: 100 / 300



261. Picard Radio Corporation Ames Radio Receiver Type DCR - Tuner & Det.. Scarce. Goes with matching 2-tube amp. Good original condition.

[JVT#: 57] Estimate Low/High: 100 / 300



258. Paramount Radio Corp. (St. Louis) . 3-Tube vertical panel set. Mfg. by the Radio Shop. No tubes.

[JVT#: 648] Estimate Low/High: 125 / 350



262. Picard Radio Corporation Ames Radio Receiver Type DCR - 2-tube AF amplifier. Scarce. Goes with matching tuner/detector. Good original condition.

[JVT#: 58] Estimate Low/High: 100 / 300



259. Parcels, Chicago Temple Horn Speaker. Scarce, unusual! "Temple" The Mark of Tone Quality. Good driver.

[JVT#: 881] Estimate Low/High: 100 / 300



263. Philco. Model 512. 6-tube AC receiver, speaker, table & chair. Rare and wonderful combination!. Red, painted flowers and bird on set lid. Matching cone speaker. Table & chair is painted cast iron, with lightning bolt designs. One leg of chair broken but repairable for display. BUYER MUST ARRANGE FOR PICKUP.

[JVT#: 831] Estimate Low/High: 250 / 450



260. Perry, The 4-Tube Receiver. No tubes.

[JVT#: 691] Estimate Low/High: 100 / 250



264. Pink-A-Tone Type F. Scarce. With (5) tubes, untested. A bit dirty inside. Missing handle.

[JVT#: 662] Estimate Low/High: 100 / 300



## Session #2 - Auction - Terrey Collection of Vintage Radio

265. Pond Radio Labs. Power Amplifier. Very nice original 1920s amplifier. With instruction sheet.

[JVT#: 178] Estimate Low/High: 100 / 300



269. Precision Radio Co., Chicago, Il. Pre-Rad Crystal Set. Horizontal cabinet, two knobs, open crystal detector. With pushbutton. Repair to top right corner of panel.

[JVT#: 892] Estimate Low/High: 100 / 250



266. Poster: Falls, Charles Buckles Navy Recruiting Poster. "You, Wireless Fans, Help the Navy Get The Hun Submarine." 41" x 27", Condition B+ / B; Rawls p. 26, Borkan p. 26.

[JVT#: 840] Estimate Low/High: 250 / 600



270. Radio Apparatus Co., Pittsburgh, Pa. RACO Crystal Set. In wooden box.

[JVT#: 930] Estimate Low/High: 100 / 350



267. Poster: Planer Radio . Poster by GHans Neumann advertising agency of Paul Planer AG, Vienna. Ca. 1924. Was folded. Radio box says "Cuba" on side.

[JVT#: 839] Estimate Low/High: 300 / 600



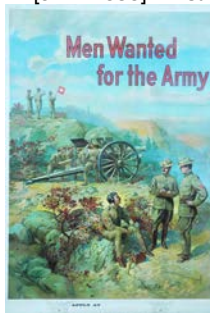
271. Rithello Horn Speaker. Rare. Large wooden horn. Bell is about 12" square and 24" long. Good driver.

[JVT#: 953] Estimate Low/High: 200 / 500



268. Poster: Whelan Army, Ca. 1917 Poster. Michaewl P. Wealan original Army recruiting poster. "Men Wanted for the Army"

[JVT#: 838] Estimate Low/High: 300 / 600



272. Radio Electric Co. (Fremont, Ohio) RE-90 Tuner, RE -100 Receiver and RE-80 Amp. Leatherette cabinets. With wood variometer, (3) Bakelite base tubes, filaments OK. One tube socket damaged & transformers replaced. With Manuf's pocket calendar. Good Condition.

[JVT#: 950] Estimate Low/High: 300 / 700



## Session #2 - Auction - Terrey Collection of Vintage Radio

273. Radio Electric (Pittsburgh, PA) Detector Unit. Scarce. Panel on base, no cabinet. With (1) brass based, tipped display tube.

[JVT#: 694] Estimate Low/High: 100 / 300



277. Radio Shop - Echophone Model A. 3-Tube receiver, straight front. Mfg by The Radio Shop. With (3) Bakelite base tubes, filament OK. Very good original condition.

[JVT#: 649] Estimate Low/High: 150 / 600



274. Radio Electric (Pittsburgh, PA) 2-stage Audio Amp.. Scarce. In cabinet. No tubes. One or both transformers not original. Good condition.

[JVT#: 199] Estimate Low/High: 100 / 300



278. Radio Shop 3-Tube Receiver. Slant front. With (3) Bakelite display 199 tubes. Very good original condition.

[JVT#: 642] Estimate Low/High: 150 / 600



275. Radio Equip. Co. (Philadelphia, PA). RA-COND. 1-Tube receiver

[JVT#: 487] Estimate Low/High: 50 / 200



279. Radio Shop - National Radio Company 1-Tube receiver. . Slant front. With (1) Bakelite base display tube. Very good original condition except for 5/8" hole in right side of cabinet.

[JVT#: 643] Estimate Low/High: 150 / 600



276. Radio Receptor Co. Home-O-Phone Crystal Set. In wooden case. Instruction label in lid is a bit aged. With Acme headphones.

[JVT#: 926] Estimate Low/High: 200 / 500



280. Radio Shop - Van Briggles Tile & Pottery Co. 1-Tube Receiver. Scarce! Blue pottery cabinet. With blue, Bakelite base tube, filament OK. Van Briggles made art pottery from 1901 to 2012.

[JVT#: 651] Estimate Low/High: 75 / 200



## Session #2 - Auction - Terrey Collection of Vintage Radio

281. Ramo. Single-Trol. 3-tube receiver, Detector, 2-stage AF amplifier. No tubes.

[JVT#: 171] Estimate Low/High: 75 / 150



285. RCA. AA-1520. 3-tube, RF Amplifier. Good condition with some paint loss on bottom edge.

[JVT#: 876] Estimate Low/High: 200 / 500



282. Ramstone. Model V. 5-Tube receiver. With (5) Bakelite base tubes, filaments OK.

[JVT#: 740] Estimate Low/High: 50 / 150



286. RCA. 106-D. Regenerative tuner; also has dual crystal detectors. Modified at factory from a 106-C. Complete and original. S/N 8286.

[JVT#: 355] Estimate Low/High: 2000 / 6000



283. RCA. AR-1300. Crystal set if used separately or can be used with the AA 1400 detector/amplifier. Good condition.

[JVT#: 25] Estimate Low/High: 200 / 500



287. RCA-Wireless Specialty Apparatus Co. IP-501. 1-tube commercial receiver. With (1) brass base display tube. Very good original condition.

[JVT#: 349] Estimate Low/High: 1000 / 3000



284. RCA. AA-1400. 3-Tube Detector and 2-step audio amplifier. Green cabinet. (Used with AR1300 crystal set.) Very good condition.

[JVT#: 26] Estimate Low/High: 200 / 500



288. Wireless Specialty Apparatus Co. Type Triode B Amplifier. Two-Step Amplifier. S/N 14. No Tubes. Transformers replaced.

[JVT#: 350] Estimate Low/High: 400 / 1200



## Session #2 - Auction - Terrey Collection of Vintage Radio

289. RCA. IP-503. Long wave loading coil for IP-501.

[JVT#: 352] Estimate Low/High: 400 / 900



293. Saal. Symphony Grand Horn Speaker. "Symphony Grand Radio Reproducer" 13" bell. Ornate decorated base and throat. Good Driver.

[JVT#: 888] Estimate Low/High: 100 / 350



290. Reinartz. Receiver. Herold Greenwood tag. Using first spider web coil. Reinartz circuit. Two cabinet segments swing out for display. 1 brass based tipped display tube.

[JVT#: 512] Estimate Low/High: 100 / 300



294. Samson Electric. TC. 4-tube receiver. Unusual double-line decorative lettering for "Samson" and "TC".

[JVT#: 701] Estimate Low/High: 25 / 125



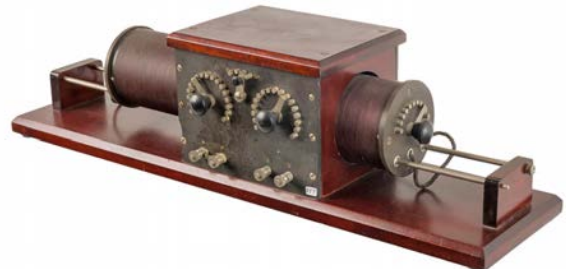
291. Resas. Deluxe Tone-A-Dyne. 5-Tube receiver. No tubes.

[JVT#: 710] Estimate Low/High: 75 / 150



295. Sears/Meteor. Loose Coupler - "Double" Receiving Transformer. Unusual design. Adjustable coils on both the "left" and "right" ends of the fixed coil. Very good condition.

[JVT#: 857] Estimate Low/High: 150 / 350



292. Rola. Re-Creator Horn Speaker. No cord. Driver condition untested.

[JVT#: 882] Estimate Low/High: 50 / 150



296. Sears/Crosley. 50 Scout. 1-tube regenerative. Bakelite book capacitor, Porcelain tube socket. With WD-12 brass base tipped tube, filament OK.

[JVT#: 397] Estimate Low/High: 75 / 250



## Session #2 - Auction - Terrey Collection of Vintage Radio

297. Sears/Crosley. SR-4. 1-Tube set with (1) Bakelite base tube, filament OK. Has paper tag on bottom in protective plastic sleeve:" ...Mfg by Precision Equip. Co.... sold by Agent Sears Roebuck Co...."

[JVT#: 781] Estimate Low/High: 100 / 300



301. Sears/Crosley. Type 3. 2-tube regen., similar to Crosley 51. Bakelite tube socket & book capacitor. No peep hole. With (2) display tubes. Has paper tag on bottom:" ...Mfg by Crosley.... Agent Sears Roebuck Co...." S/N on label matches /N on rear of panel.

[JVT#: 378] Estimate Low/High: 100 / 250



298. Sears/Crosley. SR-6. 3-tube regenerative. (Same as Crosley 3-B) With (3) Bakelite base tubes, filaments OK. Has paper tag on bottom:" ...Mfg by Crosley.... sold by Agent Sears Roebuck Co...." Serial number on label matches serial number on rear of panel.

[JVT#: 402] Estimate Low/High: 100 / 300



302. Shepard Stores (Boston). Six. 6-tube receiver. With (6) Bakelite base tubes, filament OK.

[JVT#: 752] Estimate Low/High: 100 / 300



299. Sears/Crosley. SR-8 Portable. 1-tube regenerative. Variable capacitor has meshed plates.

[JVT#: 389] Estimate Low/High: 100 / 250



303. Sherer Co. (Worcester, MA). 2-Tube Receiver. Tag in lid: "Shop at Sherer's - Worcester's Radio Headquarters". With (2) display 199 tubes.

[JVT#: 435] Estimate Low/High: 100 / 300



300. Sears/Crosley. Two Step Amplifier. 2-tube AF amplifier. Porcelain Sockets. With (2) Bakelite base tubes, filaments OK.

[JVT#: 380] Estimate Low/High: 100 / 300



304. Signal. Loose Coupler. "Stubby" appearance. Only 10" long. Excellent Condition.

[JVT#: 854] Estimate Low/High: 150 / 400



## Session #2 - Auction - Terrey Collection of Vintage Radio

305. Signal. Crystal Set. Scarce! Small set, open detector on top of box. Label on bottom has Signal logo, but is worn.

[JVT#: 896] Estimate Low/High: 100 / 250



309. Sleeper Radio Corporation. Type 3100. Scarce. 2-stage AF amplifier. No tubes. Very good condition.

[JVT#: 155] Estimate Low/High: 100 / 300



306. Simplex Radio Device Co., Irvington, N.J. 3-Tube Receiver. Simple, but interesting 3-tube set. Very good original condition.

[JVT#: 71] Estimate Low/High: 75 / 150



310. Sleeper Radio Corporation. Type 3300. Reinartz receiver. 1-tube. No tube. Very good condition.

[JVT#: 154] Estimate Low/High: 100 / 300



307. Skell Elective. Horn speaker. Unusual, small, hexagonal, horizontal bell, 8" long, 4 1/2" opening. 7" high. Might need repainting. Good driver.

[JVT#: 546] Estimate Low/High: 100 / 300



311. Sleeper Radio Corporation. Type 52 Inverse Duplex Monotrol. 4-tubes. 2-stages RF, Detector, 2-stages AF (duplexed with RF stages), 1-stage AF. With loop, possibly not original. With (4) display tubes. (Note: Smudge on panel upper left is light glare.) Very nice condition.

[JVT#: 148] Estimate Low/High: 200 / 500



308. Sleeper Radio Corporation. Type 2600. 3-tubes. Detector, 2-stages AF. With UX200 and (2) UX201A ceramic base, filaments OK. Very good condition.

[JVT#: 149] Estimate Low/High: 100 / 300



312. Sleeper Radio Corporation. Type 54 Monotrol. 4-tubes. Adv states: 3-stages RF and 3-stages AF. slant front. With (4) Bakelite base display tubes. Cabinet is refinished.

[JVT#: 150] Estimate Low/High: 100 / 300





## Session #2 - Auction - Terrey Collection of Vintage Radio

313. Stromberg-Carlson. Model 1-A. 5-tube neutrodyne receiver. Paper label in lid. No tubes. Panel excellent.

[JVT#: 693] Estimate Low/High: 100 / 200



317. Tesco. Crystal Set. Small box with control knob and open crystal detector on top.

[JVT#: 895] Estimate Low/High: 100 / 200



314. Tecla Co. Radiophone Receiver Crystal Set. Thomas E. Clark, President. In Leatherette box. Instruction sheet on lid, dirty. With handle. Very good original condition.

[JVT#: 931] Estimate Low/High: 250 / 600



318. Trav-Ler. Portable Receiver with loop. Suitcase style portable with vintage batteries. Loop is built into front cover. Very good condition.

[JVT#: 870] Estimate Low/High: 100 / 200



315. Teleradio Co. Teleradio No. 1 Crystal Set. In Wood box. Paper instruction label in lid. With Songbird Headphones. Very good original condition.

[JVT#: 927] Estimate Low/High: 100 / 300



319. Trego Radio, Kansas City, MO. 3-Tube Receiver. Neat set with metal Trego Radio label in lid. With (3) Bakelite base tubes, filaments OK.

[JVT#: 883] Estimate Low/High: 100 / 300



316. Telmaco. Type B-R Receiver. 1-Tube Receiver.

[JVT#: 923] Estimate Low/High: 100 / 300



320. Tri-City Radio Electric Supply Co. Model W-6. 3-tube receiver. No tubes. A bit dirty inside. Missing detector glass dome. Very good condition.

[JVT#: 673] Estimate Low/High: 100 / 200



## Session #2 - Auction - Terrey Collection of Vintage Radio

321. Uncle Al's Radio Shop. Miracle. Crystal Set. With "Uncle Al's Radio Shop" inspection coupon. (Note: Top is light glare.)

[JVT#: 541] Estimate Low/High: 100 / 400



325. Wireless Specialty Apparatus Co. IP-302 - Variable Air Condenser. .0015 MFD. S/N 594.

[JVT#: 769] Estimate Low/High: 200 / 600



322. Unknown Mfg. Type RFI - Duplex Universal Receiver. 2-tube receiver. Small lid lifts above tubes. With (2) Bakelite base tubes, filament OK. Very good condition.

[JVT#: 697] Estimate Low/High: 100 / 250



326. Ware. Type T, with metal tags. 3-Tube neutrodyne receiver, slant front. Panel has metal tags. With (3) Bakelite base tubes, (1) filament OK, (2) display. Possibly home made cabinet.

[JVT#: 645] Estimate Low/High: 50 / 200



323. Valleytone. Model 71. 7-tube receiver, no tubes. Nice paper label inside. Possibly refinished.

[JVT#: 718] Estimate Low/High: 75 / 150



327. Ware. Type T, with silkscreened panel. 3-Tube neutrodyne receiver, slant front. Panel has silk screened panel markings. Tube socket assembly loose. With (3) Bakelite base display tubes. Rear panel warped.

[JVT#: 644] Estimate Low/High: 50 / 200



324. Wireless Specialty Apparatus Co. IP-301 - Variable Air Condenser. .003 MFD. S/N 503. Slight delamination lower right corner of panel.

[JVT#: 770] Estimate Low/High: 200 / 600



328. Ware - Music Master. 50. 4-Tube receiver, slant front, with battery compartment in rear. With (4) Bakelite base display tubes.

[JVT#: 647] Estimate Low/High: 50 / 200



## Session #2 - Auction - Terrey Collection of Vintage Radio

329. Western Coil. Radiodyne WC-15 Jr.. Slant front, metal cabinet receiver. With (5) Bakelite base, display tubes. With silk screened hook-up instructions on back.

[JVT#: 638] Estimate Low/High: 100 / 300



333. Western Coil. WC-11. Has paper label. No tubes.

[JVT#: 625] Estimate Low/High: 100 / 300



330. Western Coil. Radiodyne WC-10. With (6) Bakelite base tubes, filament OK.

[JVT#: 624] Estimate Low/High: 100 / 400



334. Western Coil. WC-5. 4-tube set, no tubes.

[JVT#: 637] Estimate Low/High: 100 / 250



331. Western Coil. Radiodyne WC-12. With (6) Bakelite base tubes, filament OK.

[JVT#: 639] Estimate Low/High: 150 / 350



335. Western Coil. Radiodyne WC-20. 8-tube, slant front receiver. Ornately decorated chassis inside. With (8) Bakelite 199 tubes, filament OK.

[JVT#: 689] Estimate Low/High: 100 / 250



332. Western Coil. Radiodyne Junior WC-14. 5-tube receiver. No tubes.

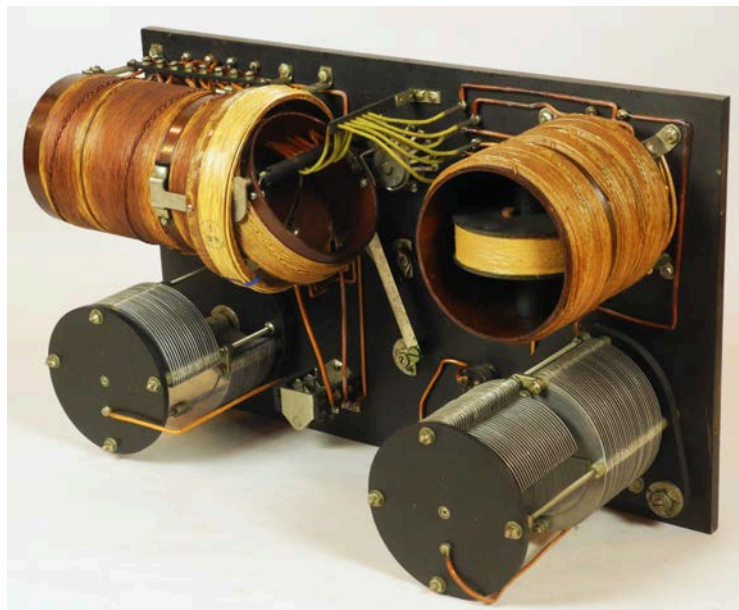
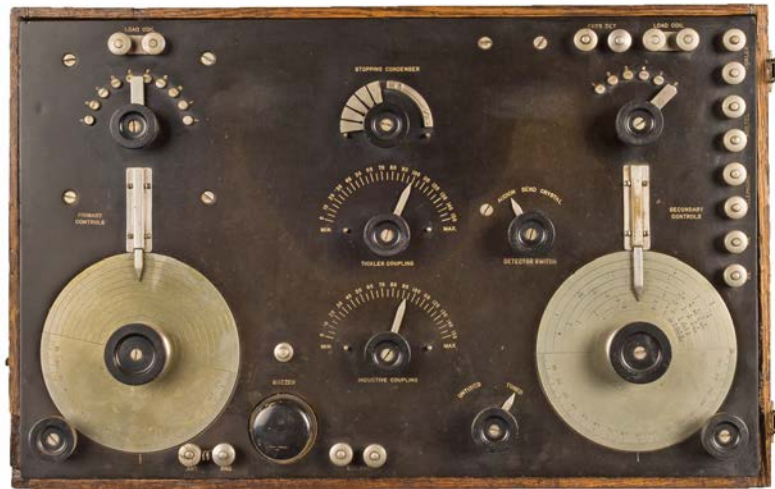
[JVT#: 687] Estimate Low/High: 100 / 250



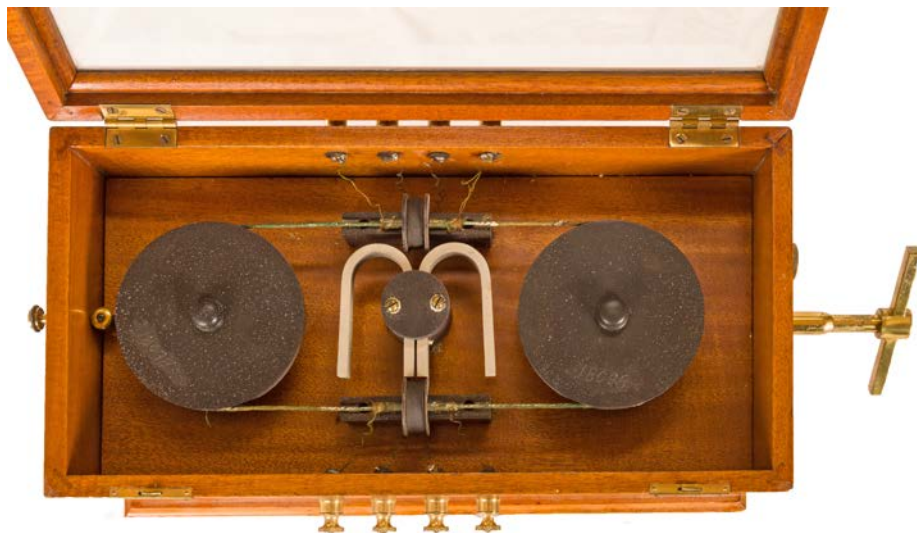
336. Wright Radio Mfg., St. Paul, MN. Acme "Special" Receiver. 1-tube receiver. Small and unusual.

[JVT#: 880] Estimate Low/High: 75 / 250





**Navy - Wireless Specialty Apparatus SE-1220 medium wave receiver. Lot 248.**



***Marconi Wireless Telegraph of America Magnetic Detector. Lot 247.***